

nixeus®



NX-EDG27



NX-EDG27S

Nixeus EDG 27" IPS (AHVA) 2560 x 1440 AMD FreeSync™ 144Hz Gaming Monitor

USER MANUAL

Version 8.31.2017

www.nixeus.com

Table of Contents

| | |
|--|---------|
| Important Information | 3 |
| Getting Started | 5 |
| Input and Connection Ports | 6 |
| Monitor & Stand Adjustment | 7 - 8 |
| Monitor Button Operations - Legends and Functions | 9 |
| Video Source Input Select | 10 |
| Volume | 11 |
| Brightness | 12 |
| Button Functions and Features for On Screen Display (OSD) Main Menu | 13 |
| On Screen Display (OSD) PICTURE Sub-Menu | 14 |
| Brightness Adjustment | 14 |
| Contrast Adjustment | 15 |
| Sharpness Adjustment | 16 |
| Aspect Ratio Adjustment | 17 |
| Ultra Vivid Adjustment | 18 |
| Dynamic Contrast Ratio Adjustment (DCR) | 19 |
| On Screen Display (OSD) COLOR Sub-Menu | 20 |
| Color Effects | 20 |
| Saturation | 21 |
| Gamma | 22 |
| Temperature - Presets | 23 |
| User Settings (Red, Green, Blue Adjustment for Color Calibration) | 23 - 25 |
| On Screen Display (OSD) - Advance Sub-Menu | 26 |
| Volume | 26 |
| Audio Source | 27 |
| DP Option | 28 |
| Over Drive | 29 |
| Low Blue Ray | 30 |
| On Screen Display (OSD) - OSD Settings Sub-Menu | 31 |
| Language | 31 |
| Menu Time | 32 |
| OSD H Position (Horizontal) | 33 |
| OSD V Position (Vertical) | 34 |
| Transparency | 35 |
| OSD Rotate | 36 |
| Reset | 37 |
| Enabling AMD FreeSync™ Technology | 38 - 39 |
| Warranty Information | 40 - 41 |
| Electronics Recycling and Proper Electronics Disposal | 41 |
| Nixeus Technology, Inc - Contact Information | 41 |
| Disclaimer | 42 |

Important Information

Important Note:

Please make sure your computer hardware and graphics card supports the Nixeus EDG 27" Monitor. Some devices and connections may not be able to support the full 2560 x 1440 resolution at 144Hz refresh rates. Avoid using 3rd party cable adapters/convertors to connect the NX-EDG27 to HDMI, VGA, and DVI output devices - we cannot guarantee they will be compatible with the NX-EDG27. If you are not sure, please contact your computer hardware's manufacturer. Please read this manual before using NX-EDG27 with your computer. It contains important information regarding the use and care of computer monitors.

Safety and Maintenance:

- 1) Do not expose the monitor to direct sunlight. Keep the monitor away from a stove or any other heat source.
- 2) Remove or secure any objects that may fall into the monitor's vents. Do not obstruct or block the cooling vents of the monitor.
- 3) Don't jam the vents on the enclosure.
- 4) When setting up the monitor for use, please ensure the power plug and socket are easy to insert and extract.
- 5) When disconnecting the power cord or DC power line for the monitor, please wait for 6 seconds before reconnecting the power cord or DC power line wires for normal operation.
- 6) Please use only approved power line and power adapters provided by Nixeus. If any power connections are missing, please contact Nixeus for a replacement. Using un-authorized power connectors may damage your monitor and void your warranty.
- 7) During operation, please do not throw objects and take care to avoid collision with the monitor. Do not over clock or modify the monitor's decoder board. Please do not apply excessive force to the LCD panel or drop the monitor. Warranty does not cover physical damages, over-clocking, and modifications to the monitor.
- 8) When monitor is not in use for a long period of time, please disconnect the power plug.
- 9) When using slightly wet cloth or LCD cleaners to clean the monitor, please disconnect the power adapter. Do not use organic solvent, alcohol, house hold glass cleaners or ammonia liquid to clean the monitor - these may damage the display panel.
- 10) Do not store or use monitor in hot, direct sunlight, or in a cold environment. To avoid electrical shock and to prevent monitor damage; do not use the monitor in dusty, rain, wet, and humid conditions. If monitor gets wet, please wipe clean with soft dry cloth as soon as possible. If foreign objects or liquids get into the monitor, please disconnect power adapter immediately. For service please contact Nixeus Technical support for service and repair at techsupport@nixeus.com
- 11) To ensure long life and best performance of the monitor, please use the monitor in these safe and optimum conditions: Temperature = 0-40 degrees Celsius (32°-95° Fahrenheit), Humidity = 20-80% RH

Avoiding Image Persistence, Incidental Image or After Image:

- 1) When the monitor is on and unattended, please use a moving screen saver. If there is a static (non moving image) on the screen, please refresh regularly or start an application to start using the screen.
- 2) Long time continuous display of static images may cause a “brand” on the screen; this is also called “image persistence” or “incidental image” or “after image.” “Brand,” “incidental image” or “after image” is a common phenomenon of LCD Panel Technology. In most cases, after turning off the power supply for a certain amount of time the “brand,” “incidental image” or “after image” will gradually disappear. Also by displaying a pure white image for the entire screen for the same duration that you had the static image that caused the image persistence may remove the image persistence. Please contact Nixeus if you need assistance in removing image persistence.

CAUTION: Serious “brand,” “incidental image” or “after image” will not disappear and cannot be repaired. This type of damage is not covered by warranty. Please take good care of your monitor to prevent serious “brand,” “incidental image” or “after image.”

Larger display panels may have some glow around the edges or corners. This is known as back light bleed and Glow - this is normal due to the display LED technology that allows more light and higher brightness to produce more vibrant colors and brighter pictures.

If your monitor needs replacement parts, warranty service, and repairs please do not attempt to do it yourself! Doing so may void the warranty. Please contact techsupport@nixeus.com for warranty support. For more Information, please visit www.nixeus.com

CAUTION: DO NOT PRESS THE RAISED CIRCULAR SECTION AT THE BOTTOM RIGHT CORNER OF THE BEZEL. It is not a button and it does not have any function.



Getting Started



NX-EDG27



NX-EDG27S

Box Contents: for NX-EDG27 (With Height Adjustable, Pivot, Tilt, and Swivel Stand)

- Nixeus EDG 27" IPS 2560x1440 AMD FreeSync 144Hz Gaming Monitor (NX-EDG27)
- Stand Base x 1 (with 4 screws)
- **Stand Shaft x 1 (with 4 screws) - preinstalled.**
- DisplayPort to DisplayPort Cable x 1
- Power Adapter & Power Cable x 1
- NX-EDG27 Quick Start Guide
- 3.5mm AUX Audio Cable

Installing Base Stand: (Tools needed – Philips Screw Driver)

Please refer to quick start guide for installation of Stand Base and Stand Shaft.

Box Contents: for NX-EDG27S (With Base Tilt Only Stand)

- Nixeus EDG 27" IPS 2560x1440 AMD FreeSync 144Hz Gaming Monitor (NX-EDG27S)
- Stand Base x 1 (with 1 screw)
- **Stand Shaft x 1 (with 4 screws) - preinstalled.**
- DisplayPort to DisplayPort Cable x 1
- Power Adapter & Power Cable x 1
- NX-EDG27 Quick Start Guide
- 3.5mm AUX Audio Cable

Installing Base Stand: (Tools needed – Philips Screw Driver)

Please refer to quick start guide for installation of Stand Base and Stand Shaft.

NOTE: Both the NX-EDG27 and NX-EDG27S stands are removable to allow for 100% compatibility with 3rd Party Custom VESA Display Mounting Solutions.

Input and Connection Ports



DC-IN: External power connector for Power Adapter

DVI: Dual Link DVI

HDMI 2: HDMI 1.4

HDMI 1: HDMI 2.0 (Supports 2560x1440 Resolution with Refresh Rates up to 144Hz with HDMI 2.0 compliant output device and cable)

DP: DisplayPort 1.2a (Supports 2560x1440 Resolution with Refresh Rates up to 144Hz and with AMD FreeSync)

Green Audio Input Port: For connecting the audio cable from the audio output of your computer (when using DVI video connection), gaming console, or other audio output source device.

Blue Audio Output Port: For connecting your headphones, desktop speakers, sound bar, or any other audio speaker device.

The included DisplayPort to DisplayPort cable is for connecting the NX-EDG27 for DisplayPort output devices/hardware.

NOTE: Do not use cable/adpater converters to connect the NX-EDG27 to HDMI, DVI, or VGA output hardware/devices. We cannot guarantee these adapters will work with the NX-EDG27. To enable AMD FreeSync™ Technology - a direct DisplayPort only cable connection to your computer is required.

NX-EDG27 Power Cable and Power Supply:

Only use the power cable included with the NX-EDG27. Using any other un-authorized power adapters may damage your monitor and void your warranty. Connect the power cable to internal power supply on the back of the monitor.

Monitor and Stand Adjustment

Monitor Tilting Forward/Back (NX-EDG27 and NX-EDG27S):

Make sure the NX-EDG27 is on a stable level surface. Use both hands, hold the top and bottom of the frame to tilt the monitor forward or backward by up to 15°.

Monitor Swivel Left/Right (NX-EDG27):

Make sure the NX-EDG27 is on a stable level surface. Holding the base shaft with your hand, carefully twist the monitor shaft left or right to desired orientation.

Monitor Height Adjustment (NX-EDG27):

Use both hands, press down the locking button, the slide the monitor up and down the stand shaft for your desired height by up to 4 inches. Release button to lock in the desired height.



Monitor Pivot to 90° Portrait Mode (NX-EDG27):

Make sure the NX-EDG27 is on a stable level surface. Using both hands, first raise the monitor to the highest point. Next pivot the monitor clock wise into portrait mode.



Monitor Button Operations - Legends and Functions



Button Functions when NOT navigating in the On Screen Display (OSD) Main Menu

- "**AUTO**" - Press to AUTO detect video inputs. Also brings up the video INPUT menu for DP, HDMI 2.0, HDMI 1.4 and DVI for switching to different video source.
- "**MENU**" - Brings up and enables the On Screen Display Menu (OSD).
- "**VOL+**" - Increase display's speaker volume. Press to navigate forward or go to next (to the right).
- "**VOL-**" - Decrease display's speaker volume. Press to navigate back or go to previous (to the left).
- "**UP**" - Increase display brightness.
- "**DOWN**" - Decrease display brightness.
- [**⏻**] - POWER ON/OFF

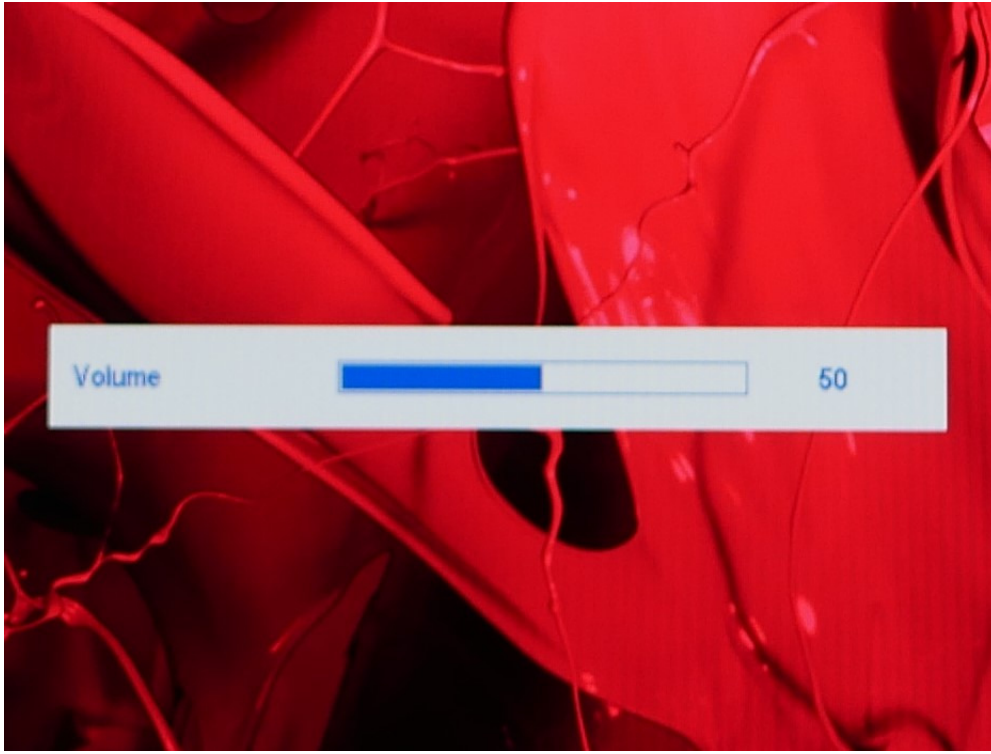
Video Source Input Selection



The NX-EDG27 supports multiple video source devices with DisplayPort 1.2, HDMI 2.0, HDMI 1.4, and Dual Link DVI connections.

- a) To bring up the INPUT sub menu, press **"AUTO."**
- b) Press **"VOL+"** to move right or press **"VOL-"** to move left to select the input for your current video output source and press **"MENU"** to confirm.

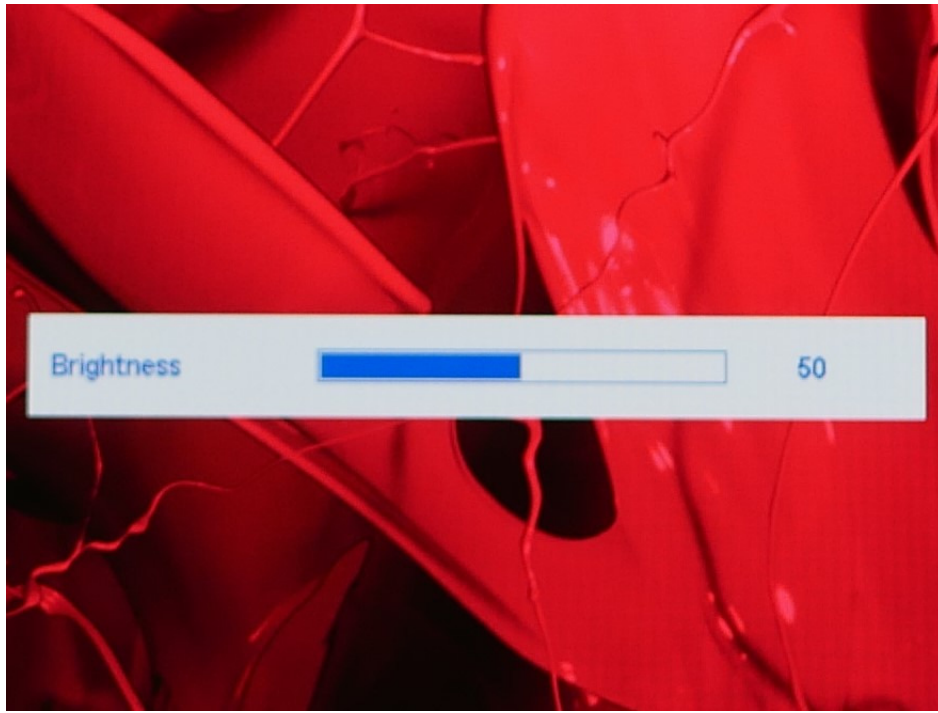
VOLUME



The NX-EDG27 includes two built in stereo speakers.

A) To adjust the volume press "**VOL+**" to move right or press "**VOL-**" to move left to select the desired volume.

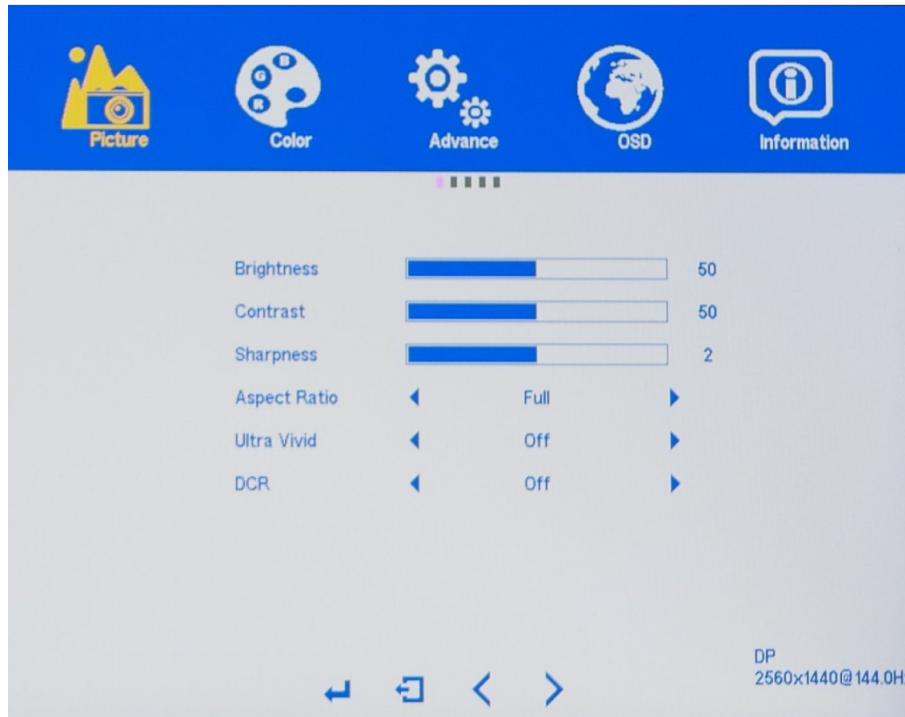
Brightness



A) To adjust the BRIGHTNESS press **"UP"** to move right or press **"DOWN"** to move left to select the desired BRIGHTNESS for the display.

Button Functions and Features for On Screen Display (OSD)

Main Menu



"**AUTO**" - Press to go back to previous or to exit.

"**MENU**" - Press to confirm or for ok.

"**VOL+**" - Press to increase setting status bar. Press to navigate forward or go to next (to the right).

"**VOL-**" - Press to decrease settings status bar. Press to navigate back or go to previous (to the left).

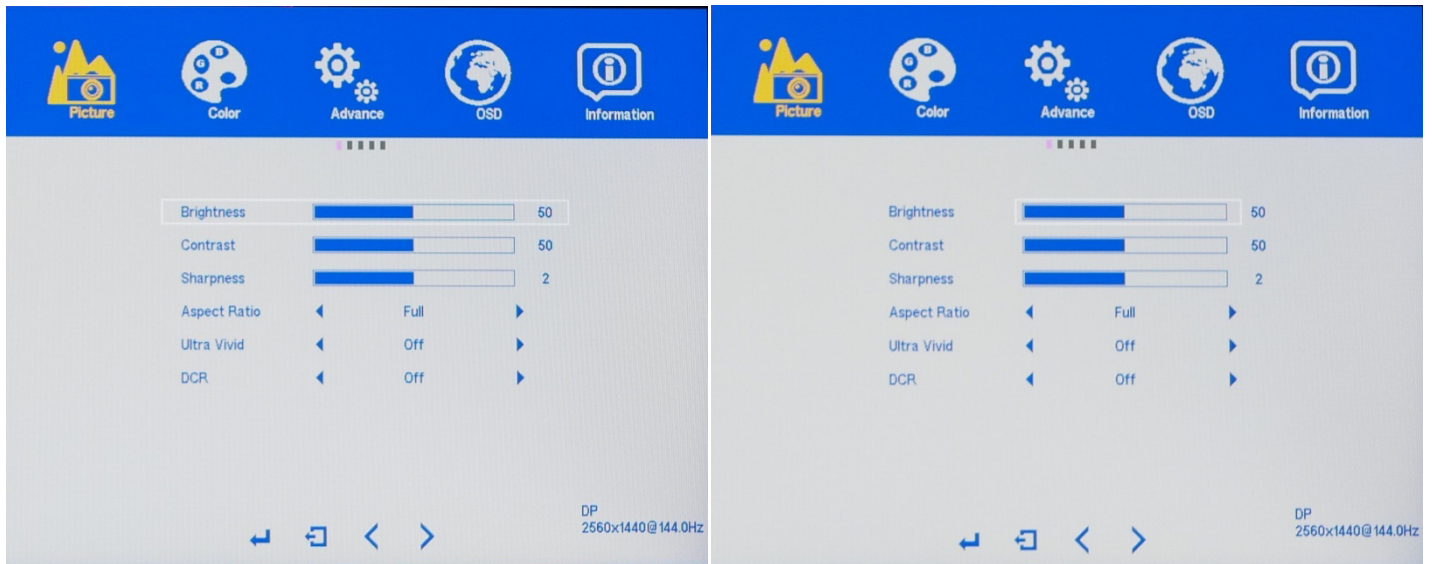
"**UP**" - Press to navigate up.

"**DOWN**" - Press to navigate down.

[**⏻**] - POWER ON/OFF

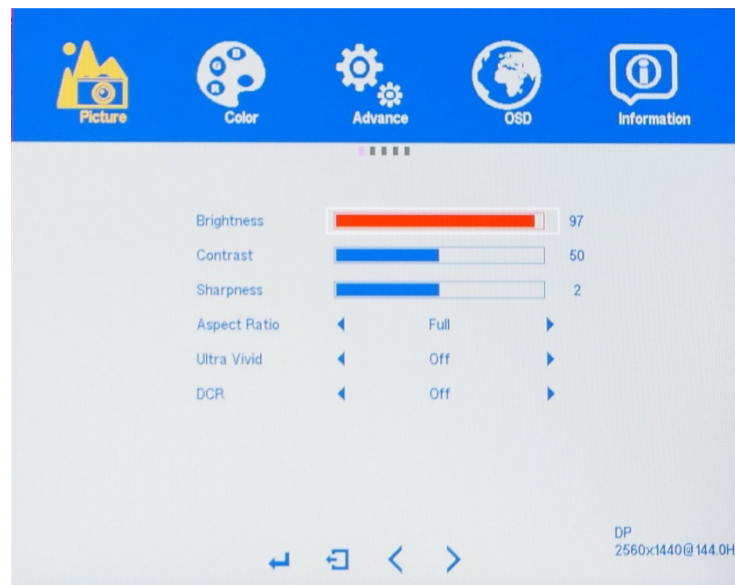
On Screen Display (OSD) PICTURE SUB-MENU

PICTURE (Sub-Menu) - BRIGHTNESS



a) To bring up the OSD Main Menu, press "**MENU**"

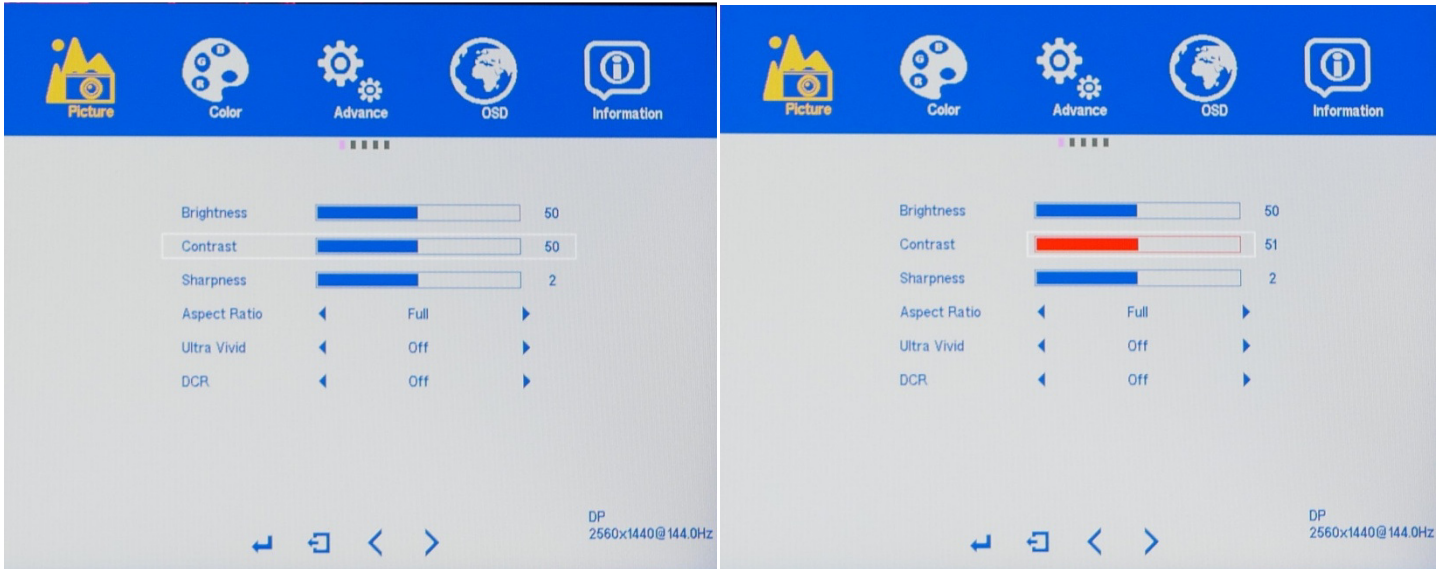
b) Make sure the PICTURE sub-menu is highlighted (see picture) and press "**MENU**" to confirm selection. Highlight BRIGHTNESS and press "**MENU**" to enter into BRIGHTNESS adjustment.



c) Press "**VOL-**" to make brightness lower or press "**VOL+**" to make brightness higher. Default BRIGHTNESS is at 50.

d) Once you adjust the BRIGHTNESS settings to your desired level, press "**MENU**" once to confirm and then press "**AUTO**" exit to the PICTURE sub-menu.

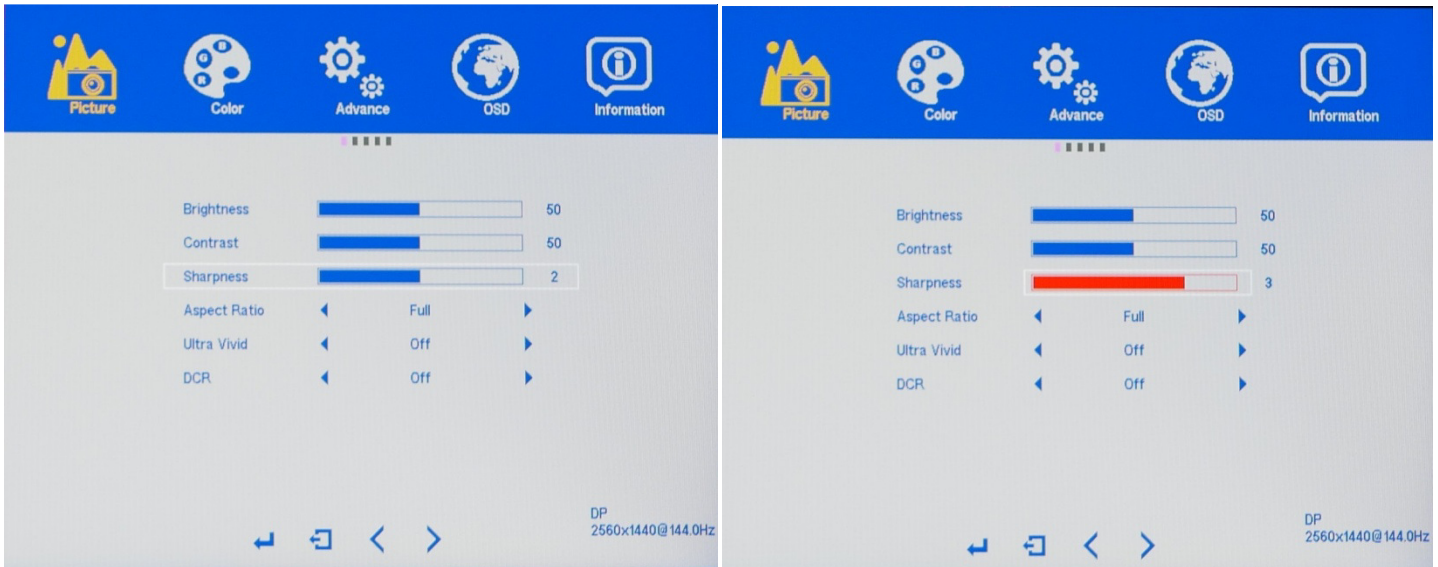
PICTURE (Sub-Menu) - CONTRAST



The CONTRAST Feature allows you to set your preferred static contrast ratio of the luminance of the brightness color (white) to that of the darkest color (black).

- a) In the PICTURE sub-menu, use the arrow buttons "**DOWN**" or "**UP**" to highlight CONTRAST and press "**MENU**" to confirm selection.
- b) Press "**VOL -**" to make the CONTRAST lower or press "**VOL+**" to make the CONTRAST higher. Default CONTRAST is at 50.
- c) Once you adjust the CONTRAST settings to your desired level, press "**MENU**" once to confirm and press "**AUTO**" exit to the PICTURE sub-menu.

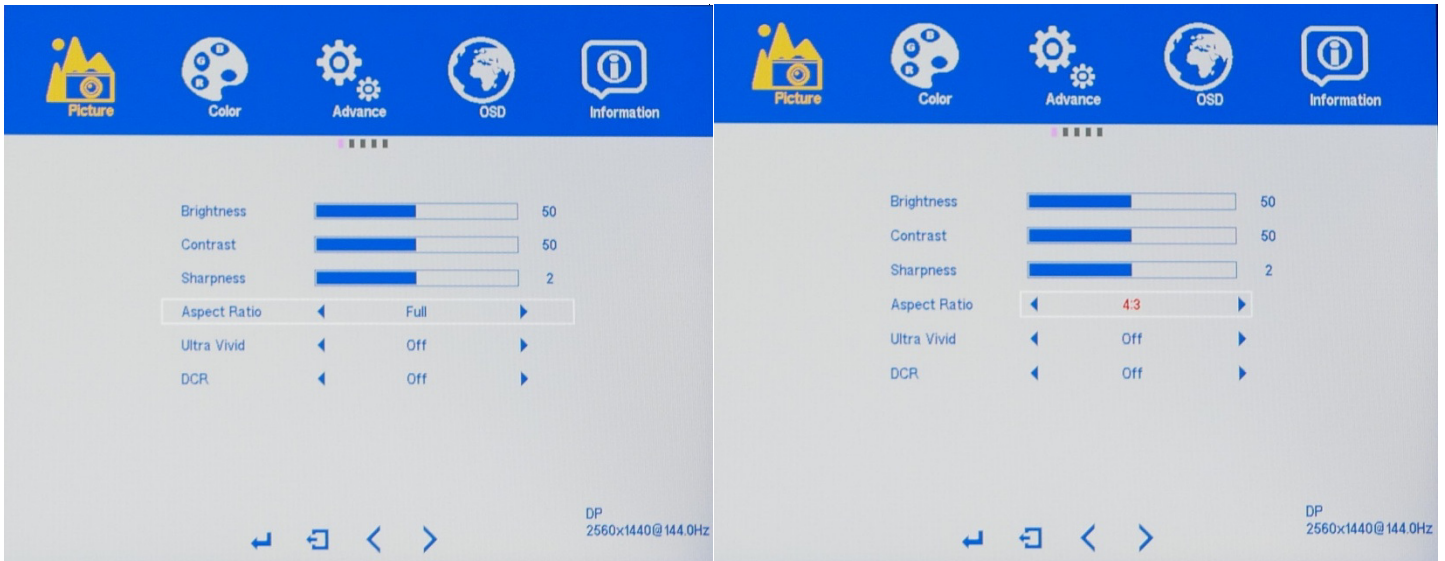
PICTURE (Sub-Menu) - SHARPNESS



The SHARPNESS feature allows you to set your preferred sharpness for your text, video, and picture content.

- a) In the PICTURE sub-menu, use the arrow buttons "DOWN" or "UP" to highlight SHARPNESS and press "MENU" to confirm selection.
- b) Press "VOL -" to make the SHARPNESS lower or press "VOL+" to make the SHARPNESS higher. Default SHARPNESS is at 2.
- c) Once you adjust the SHARPNESS settings to your desired level, press "MENU" once to confirm and press "AUTO" exit to the PICTURE sub-menu.

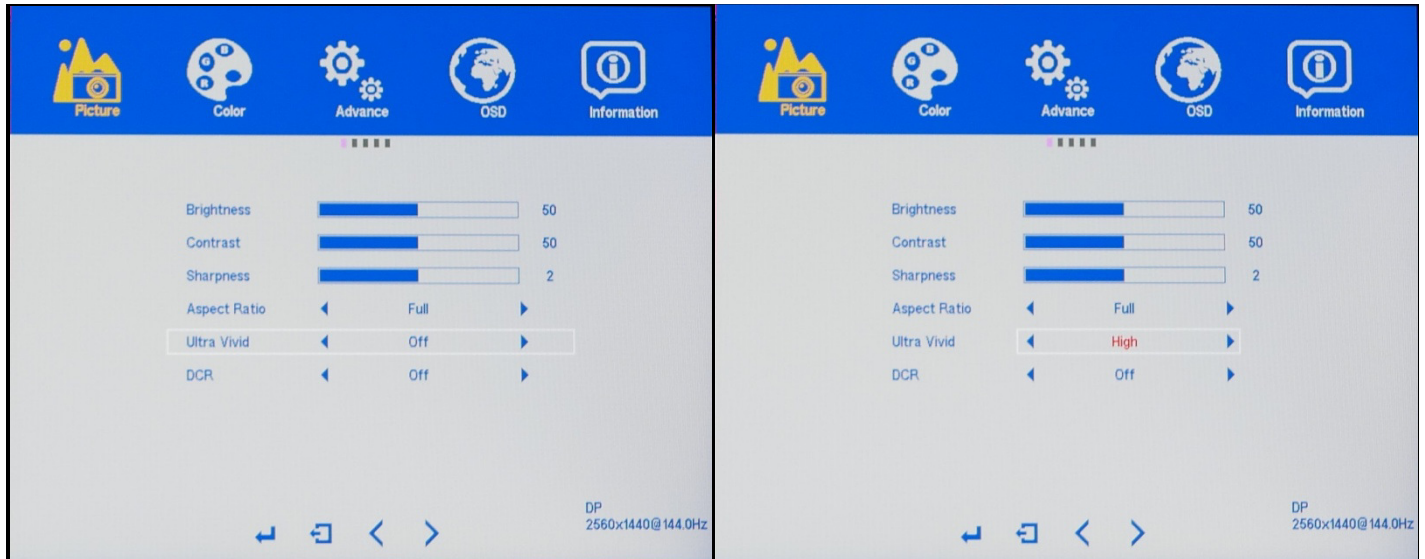
PICTURE (Sub-Menu) - ASPECT RATIO



The ASPECT RATIO feature allows you to set your preferred ASPECT RATIO for your monitor's video, and picture content. Available ASPECT RATIO settings are FULL (16:9), 4:3, and 1:1

- a) In the PICTURE sub-menu, use the arrow buttons "**DOWN**" or "**UP**" to highlight ASPECT RATIO and press "**MENU**" to confirm selection.
- b) Press "**VOL -**" to make the SHARPNESS lower or press "**VOL+**" to change the ASPECT RATIO. Default ASPECT RATIO is at FULL and is the recommended setting.
- c) Once you adjust the ASPECT RATIO settings to your desired level, press "**MENU**" once to confirm and press "**AUTO**" exit to the PICTURE sub-menu.

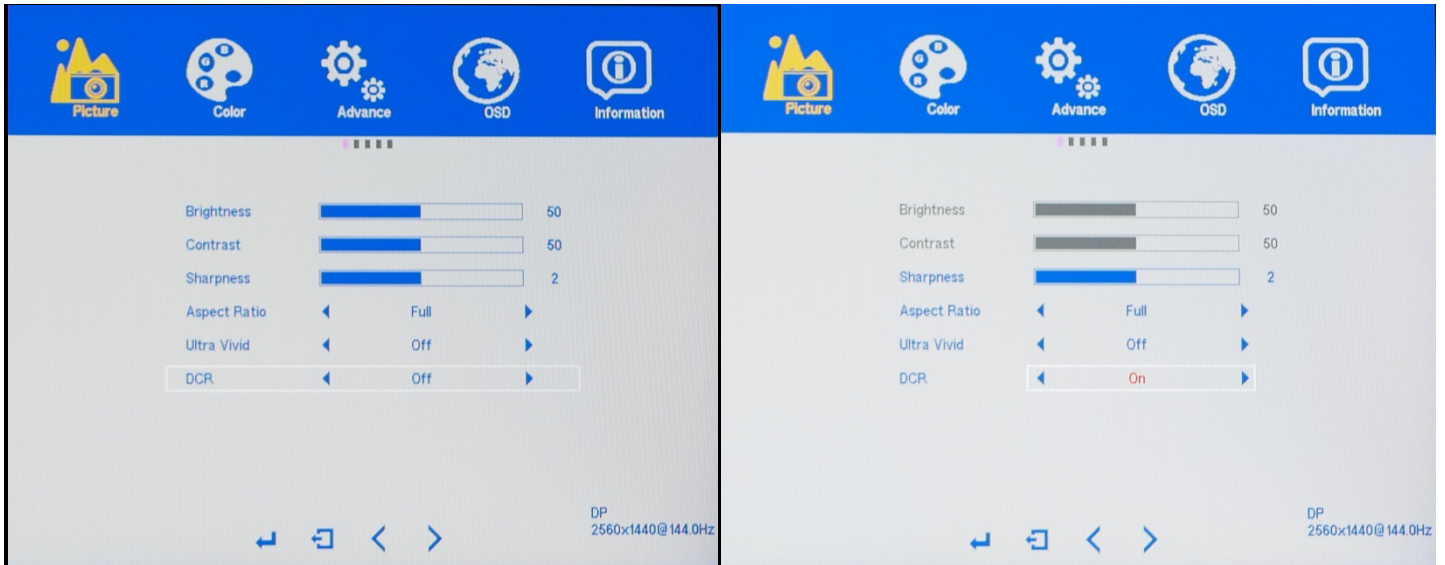
PICTURE (Sub-Menu) - ULTRA VIVID



The ULTRA VIVID feature allows you to set your preferred settings for more vivid or vibrant colors for your text, video, and picture content. Available settings is OFF, LOW, MEDIUM, and HIGH. Enabling this feature may affect the accuracy of picture color, affect picture/video quality, or add input lag in PC games (**we recommend leaving this feature off for PC Gaming**).

- a) In the PICTURE sub-menu, use the arrow buttons "**DOWN**" or "**UP**" to highlight ULTRA VIVID and press "**MENU**" to confirm selection.
- b) Press "**VOL -**" or press "**VOL+**" to adjust the ULTRA VIVID settings. Default ULTRA VIVID is OFF.
- c) Once you adjust the ULTRA VIVID settings to your desired level, press "**MENU**" once to confirm and press "**AUTO**" exit to the PICTURE sub-menu.

PICTURE (Sub-Menu) - DYNAMIC CONTRAST RATIO (DCR)



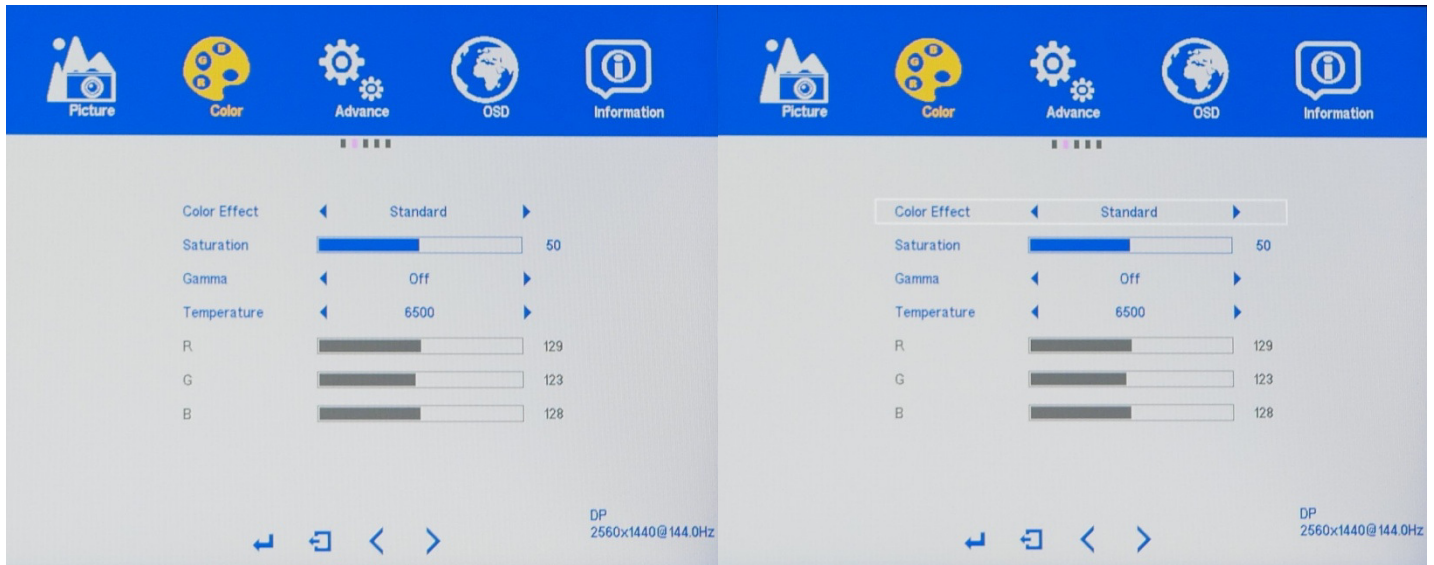
The DCR (DYNAMIC CONTRAST RATIO) feature allows you to see more of a dark image or dark scene by increasing the contrast ratio dynamically. Enabling this feature may affect the accuracy of picture color, affect picture/video quality, or add input lag in PC games (**we recommend leaving this feature off for PC Gaming**).

- a) In the PICTURE sub-menu, use the arrow buttons "**DOWN**" or "**UP**" to highlight DCR and press "**MENU**" to confirm selection.
- b) Press "**VOL -**" or press "**VOL+**" to make the DCR ON or OFF. Default DCR is at OFF.
- c) Once you adjust the DCR to your desired settings, press "**MENU**" once to confirm and press "**AUTO**" exit to the PICTURE sub-menu.

On Screen Display (OSD) COLOR SUB-MENU

NOTE: Only Custom Calibrate the Monitor's COLOR SETTINGS if you have a Colorimeter.

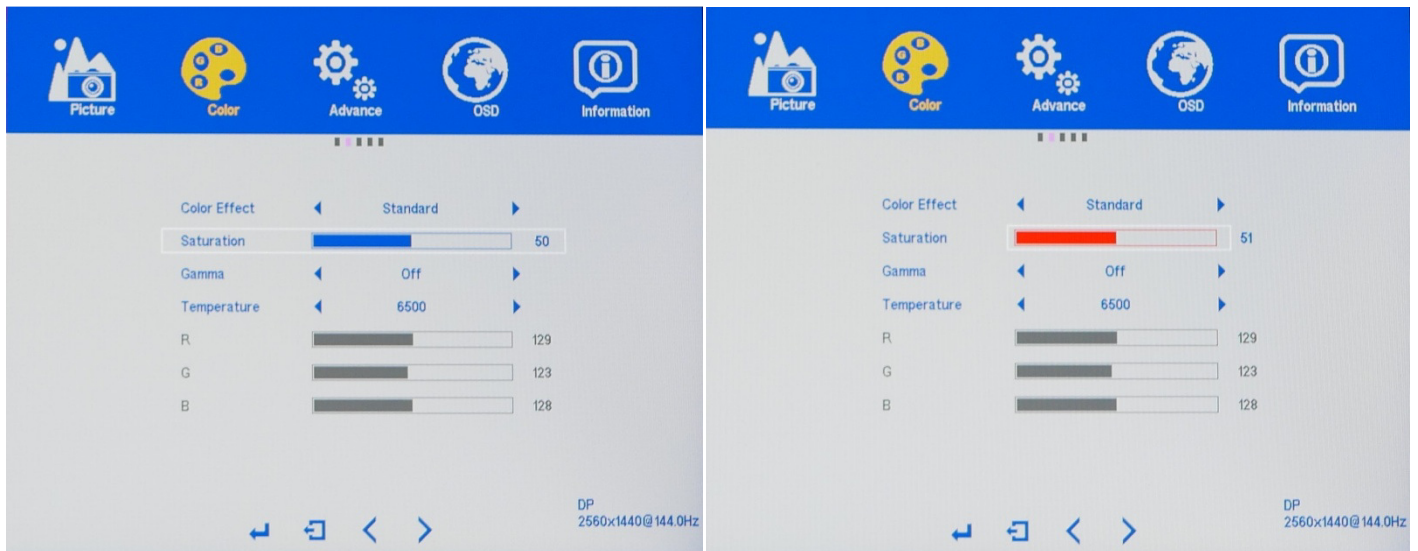
COLOR (Sub-Menu) - COLOR EFFECTS



The NX-EDG27 has five preset COLOR EFFECTS for your professional use, general use and gaming needs - STANDARD, GAMING, MOVIES, PHOTO, and VIVID.

- In the COLOR sub-menu, use the arrow buttons "**DOWN**" or "**UP**" to highlight COLOR EFFECTS and press "**MENU**" to confirm selection.
- Press "**VOL -**" to make the COLOR EFFECTS lower or press "**VOL+**" to change the COLOR EFFECTS. Default COLOR EFFECTS is at STANDARD.
- Once you adjust the COLOR EFFECTS settings to your desired level, press "**MENU**" once to confirm and press "**AUTO**" exit to the COLOR sub-menu.

COLOR (Sub-Menu) - SATURATION



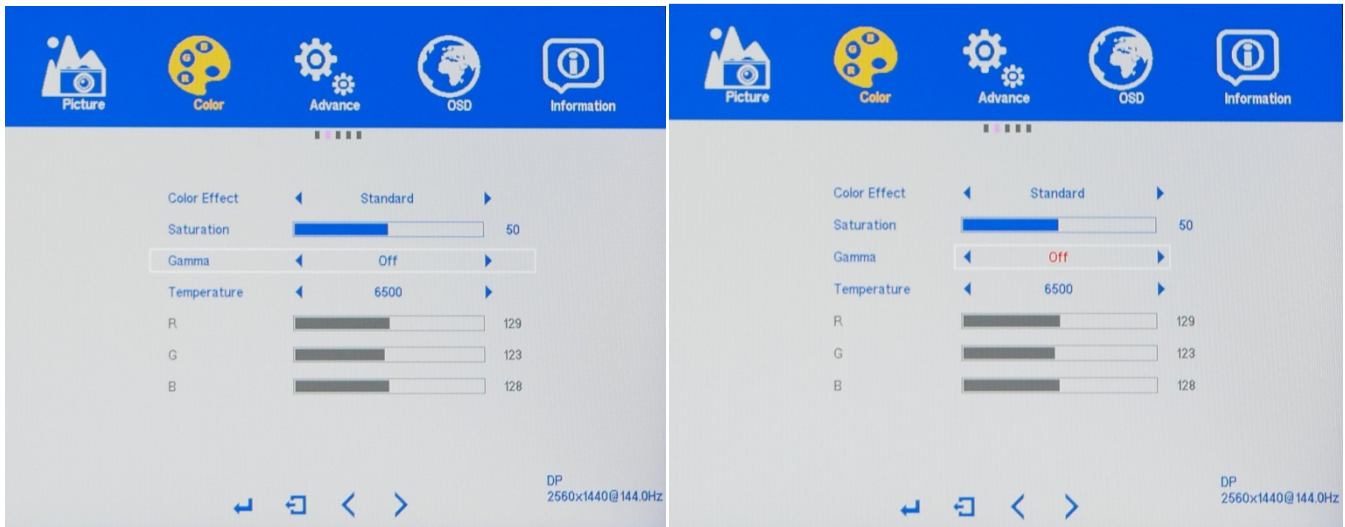
The NX-EDG27 has SATURATION settings to allow you to adjust color saturations for your professional use, general use and gaming needs.

- a) In the COLOR sub-menu, use the arrow buttons "DOWN" or "UP" to highlight SATURATION and press "MENU" to confirm selection.
- b) Press "VOL -" to make the SATURATION lower or press "VOL+" to make the SATURATION higher. Default SATURATION is at 50.
- c) Once you adjust the SATURATION settings to your desired level, press "MENU" once to confirm and press "AUTO" exit to the COLOR sub-menu.

NOTE: Only Custom Calibrate the Monitor's SATURATION SETTINGS if you have a Colorimeter.

COLOR TEMPERATURE (Sub-Menu) - GAMMA

NOTE: Only Custom Calibrate the Monitor's GAMMA and COLOR TEMPERATURE if you have a Colorimeter.

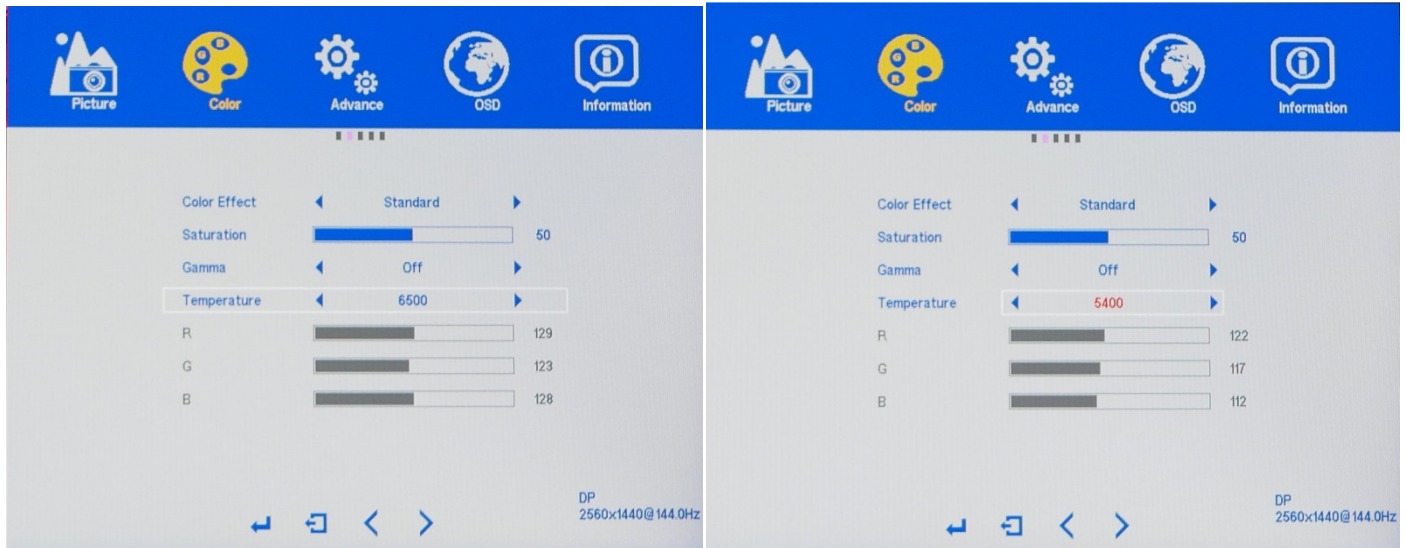


The NX-EDG27 has five preset GAMMA for your professional use, general use and gaming needs - OFF, 1.8, 2.0, 2.2 and 2.4.

- In the COLOR sub-menu, use the arrow buttons "DOWN" or "UP" to highlight COLOR EFFECTS and press "MENU" to confirm selection.
- Press "VOL -" to make the COLOR EFFECTS lower or press "VOL+" to make the COLOR EFFECTS higher. Default COLOR EFFECTS is at 2.
- Once you adjust the COLOR EFFECTS settings to your desired level, press "MENU" once to confirm and press "AUTO" exit to the COLOR sub-menu.

NOTE: Only Custom Calibrate the Monitor's GAMMA and COLOR TEMPERATURE if you have a Colorimeter.

COLOR (Sub-Menu) – TEMPERATURE



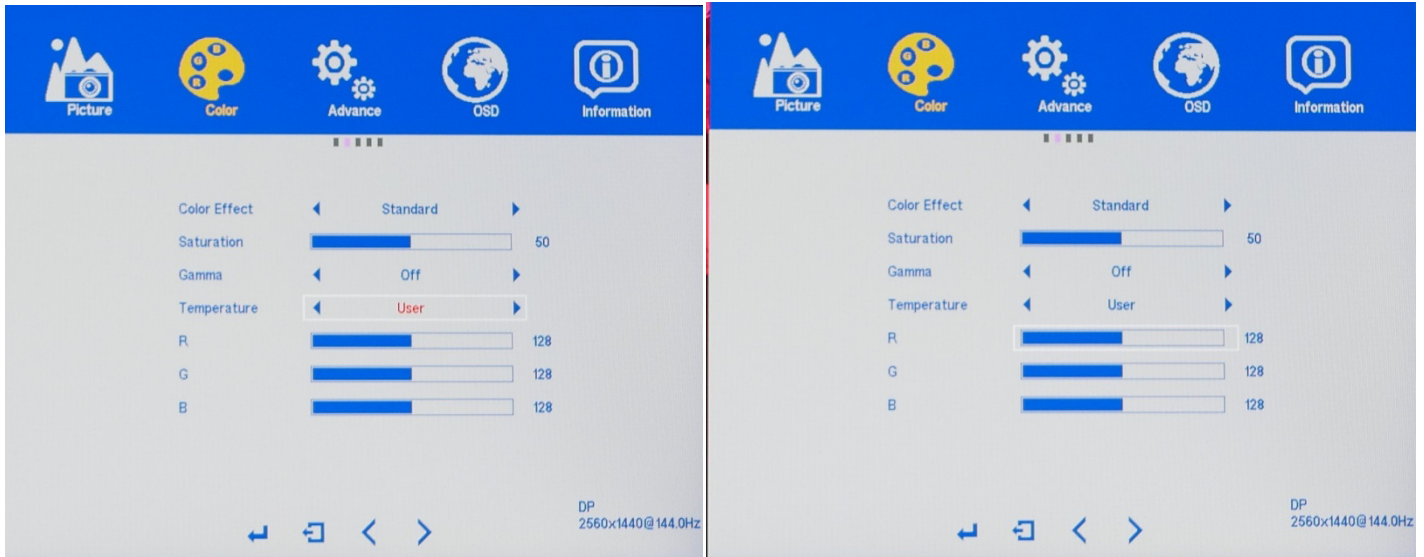
The NX-EDG27 has a premium feature to allow you to custom calibrate the color temperature and color settings for RED, GREEN, and BLUE without the assistance or need of your computer's operating system or graphics card color temperature calibration features. This feature allows you to create more accurate colors for content creation, print work, photography and graphic design. We recommend only to use this feature with colorimeter hardware. To enable this feature and make it active for the video/picture of the monitor, you have to enable and activate USER in the TEMPERATURE category of the COLOR Sub-Menu.

- In the COLOR sub-menu, use the arrow buttons "DOWN" or "UP" to navigate to TEMPERATURE and press "MENU" to enable TEMPERATURE selection.
- Use "VOL -" or "VOL+" to cycle through the settings and to highlight USER.
- Press "MENU" once to confirm the USER selection and exit to the COLOR sub-menu. The RED, GREEN, and BLUE are now selectable for custom configuration.

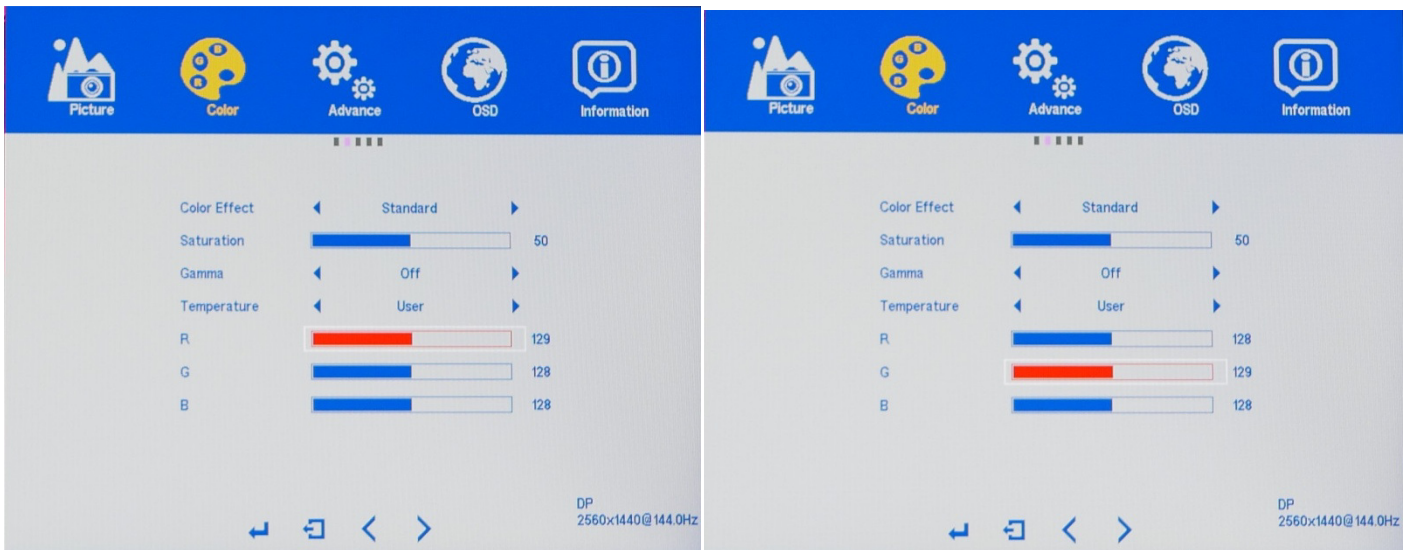
NOTE: TEMPERATURE default settings is 6500K. Other TEMPERATURE settings of 5400K, SRGB, USER, and 9300K. The TEMPERATURE setting must be set to USER. USER needs to always be highlighted and selected in TEMPERATURE settings if you need to custom calibrate colors for professional work. If USER is not selected - the RED, GREEN, and BLUE will be grayed out and not selectable for configuration. Also if USER is not selected or active - the custom settings will not be represented on the monitor and picture/video.

NOTE: Only Custom Calibrate the Monitor's GAMMA and COLOR TEMPERATURE if you have a Colorimeter.

TEMPERATURE - USER (Custom Color Temperature Adjustments)

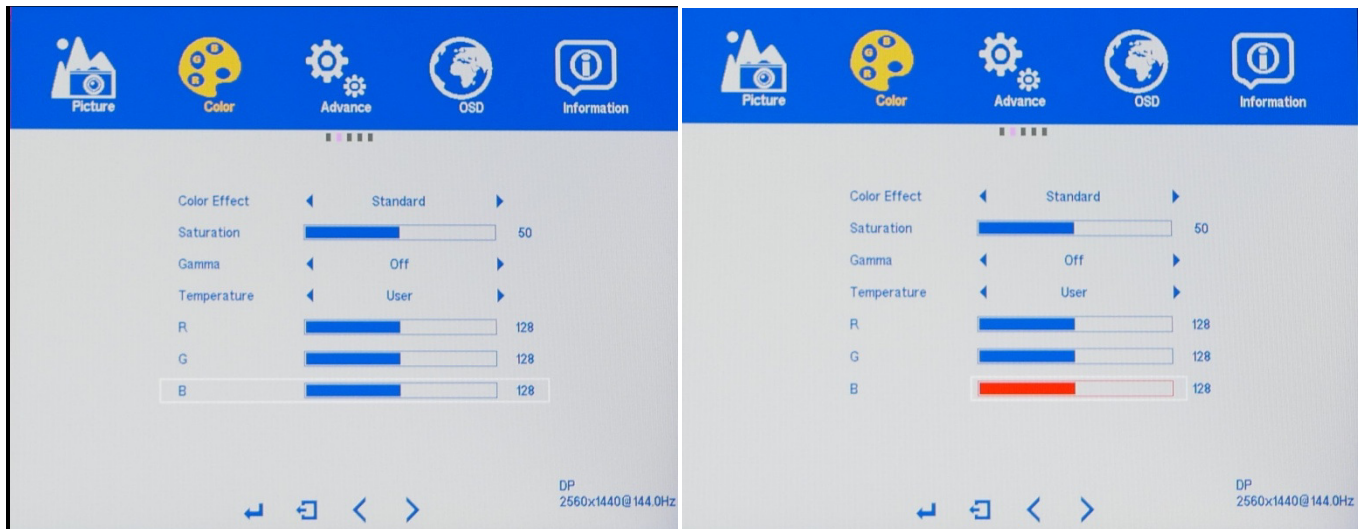


- To adjust the RED settings, highlight **R** and press "MENU".
- Use the arrow buttons "DOWN" or "UP" to adjust between 0 to 100 for the RED temperature settings.
- Once you set your desired RED temperature settings, press "MENU" to confirm selection and press "AUTO" exit to COLOR sub-menu to adjust the next color settings.



- To adjust the GREEN setting, Use the buttons "DOWN" or "UP" to navigate and highlight **G** and press "MENU".
- Use the buttons **VOL -** or "VOL+" to adjust between 0 to 100 for the GREEN temperature settings.
- Once you set your desired GREEN temperature settings, press "MENU" to confirm selection and press "AUTO" exit to COLOR sub-menu to adjust the next color settings.

NOTE: Only Custom Calibrate the Monitor's GAMMA and COLOR TEMPERATURE if you have a Colorimeter.



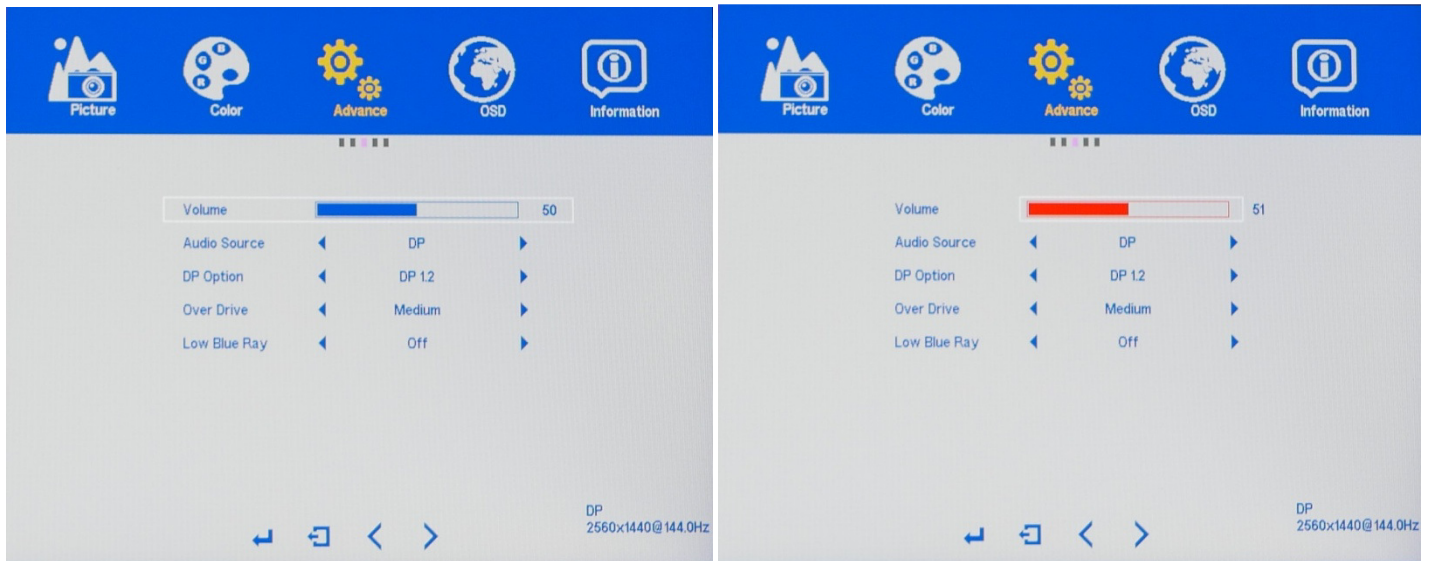
- a) To adjust the BLUE settings, Use the arrow buttons "**DOWN**" or "**UP**" to navigate and highlight **B** and press "**MENU**".
- b) Use the arrow buttons **VOL -** or "**VOL+**" to adjust between 0 to 100 for the BLUE temperature settings.
- c) Once you set your desired BLUE temperature settings, press "**MENU**" to confirm selection and press "**AUTO**" exit to COLOR sub-menu to adjust the next color settings or to exit out of the COLOR sub-menu.
- d) Once you are finished adjust and calibrating the all the R,G,B color settings - Press "**AUTO**" once to exit to the COLOR sub-menu. To completely exit out of the On Screen Display press "**AUTO**" again.

NOTE: When using a colorimeter to calibrate the monitor, you may need to exit and enter each RGB (Red, Green, Blue) color multiple times to adjust the color temperature settings to reach the desired results. Your computer's color output may have slight variations of color reproduction and image quality depends on graphics card used and video output port used. **We recommend using a DisplayPort connection for the best and most consistent color performance.**

NOTE: Only Custom Calibrate the Monitor's GAMMA and COLOR TEMPERATURE if you have a Colorimeter.

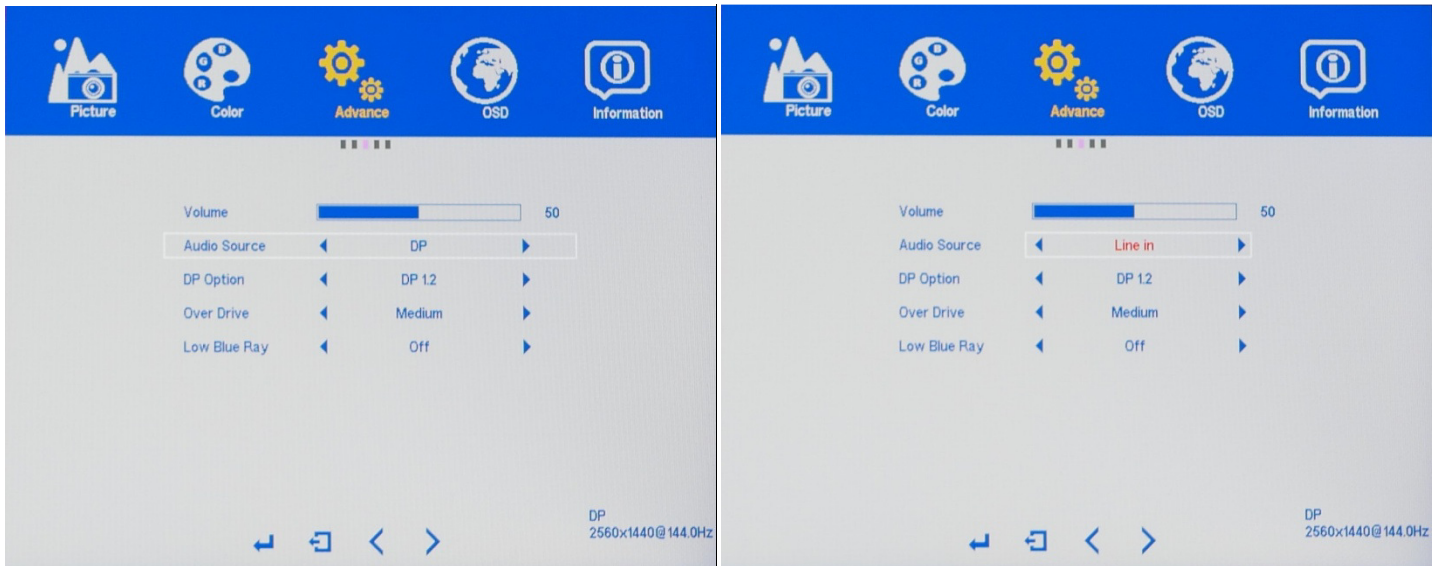
ADVANCE (OSD) - SETTINGS

VOLUME



- a) In the ADVANCE sub-menu, use the buttons "**DOWN**" or "**UP**" to highlight VOLUME and press "**MENU**" to confirm selection.
- b) Press "**VOL -**" to make the VOLUME lower or press "**VOL+**" to make the VOLUME higher (Default VOLUME is at 50).
- c) Once you adjust the VOLUME settings to your desired level, press "**MENU**" once to confirm and press "**AUTO**" to exit to the ADVANCE sub-menu.

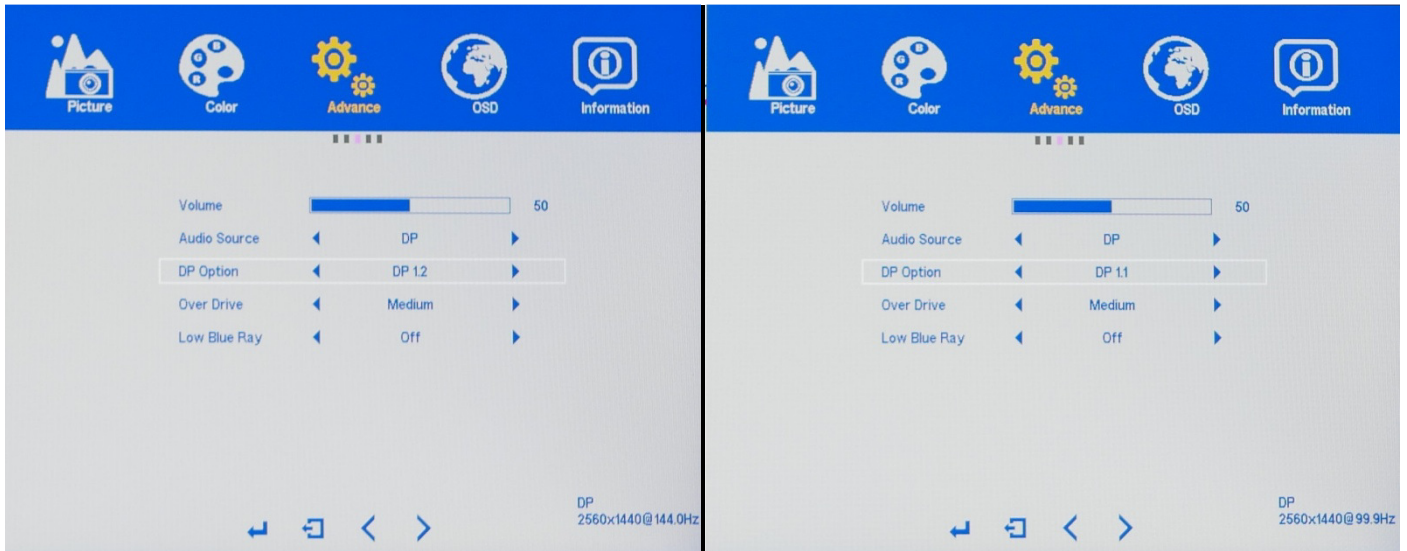
AUDIO SOURCE



The AUDIO SOURCE settings gives you the option to select which connection source to transmit audio to the NX-EDG27 internal speakers. By default, the AUDIO SOURCE will be set the cable connection transmitting Video or picture. Only DisplayPort and HDMI can transmit video and audio to the NX-EDG27. The NX-EDG27 also includes a 3.5mm audio cable for an "Line In" alternative audio source transmission - mainly for the DVI connection since DVI cannot transmit audio.

- a) In the ADVANCE sub-menu, use the buttons "**DOWN**" or "**UP**" to highlight AUDIO SOURCE and press "**MENU**" to confirm selection.
- b) Press "**VOL -**" or "**VOL+**" change the AUDIO SOURCE (if you are planning to use "Line In" with 3.5mm audio cable). Default AUDIO SOURCE may be DP or HDMI.
- c) Once you selected your AUDIO SOURCE, press "**MENU**" once to confirm and press "**AUTO**" to exit to the ADVANCE sub-menu.

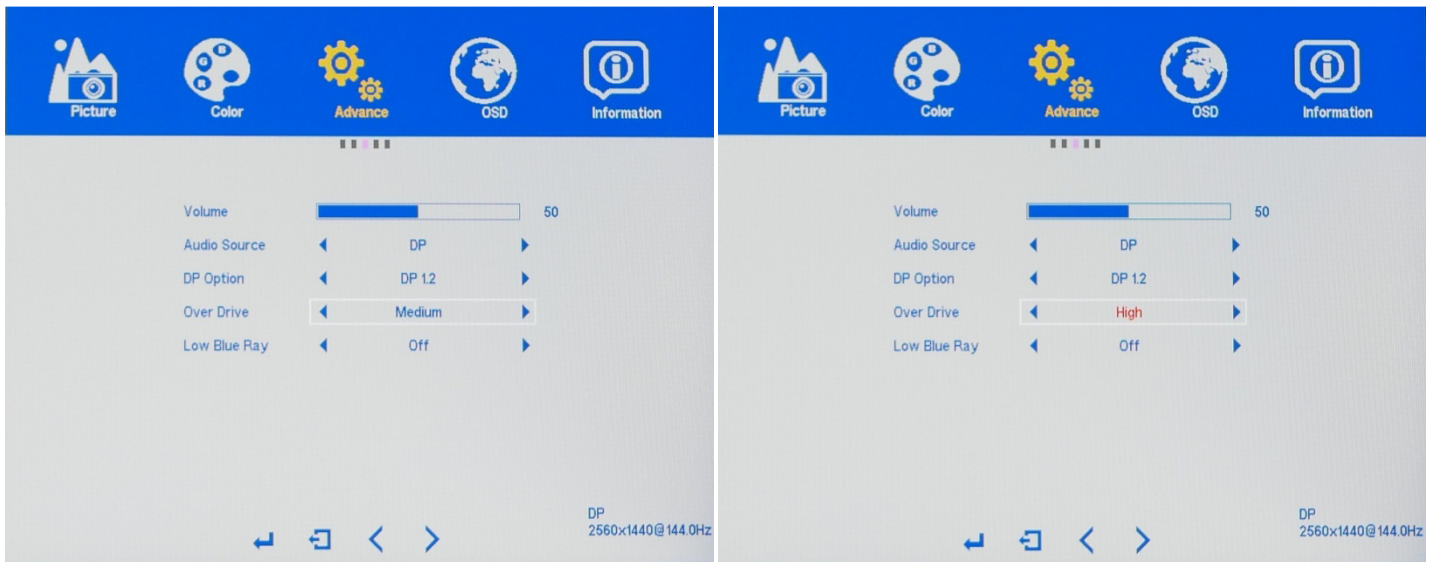
DP OPTION – DISPLAYPORT OPTION



The NX-EDG27 two DP OPTION (DisplayPort Options) for your DisplayPort cable and DisplayPort source version type. The default setting is DP 1.2, which is required for the NX-EDG27 to have a resolution of 2560x1440, AMD FreeSync and 144Hz refresh rate. The alternative setting of DP 1.1 can only support 2560x1440 resolution with 60Hz refresh rate.

- a) In the ADVANCE sub-menu, use the buttons "**DOWN**" or "**UP**" to highlight DP OPTION and press "**MENU**" to confirm selection.
- b) Press "**VOL -**" or "**VOL+**" change the DP OPTION. The default setting is DP 1.2 and is the recommended settings.
- c) Once you selected your DP OPTION settings, press "**MENU**" once to confirm and press "**AUTO**" to exit to the ADVANCE sub-menu.

OVER DRIVE – ANTI-GHOSTING

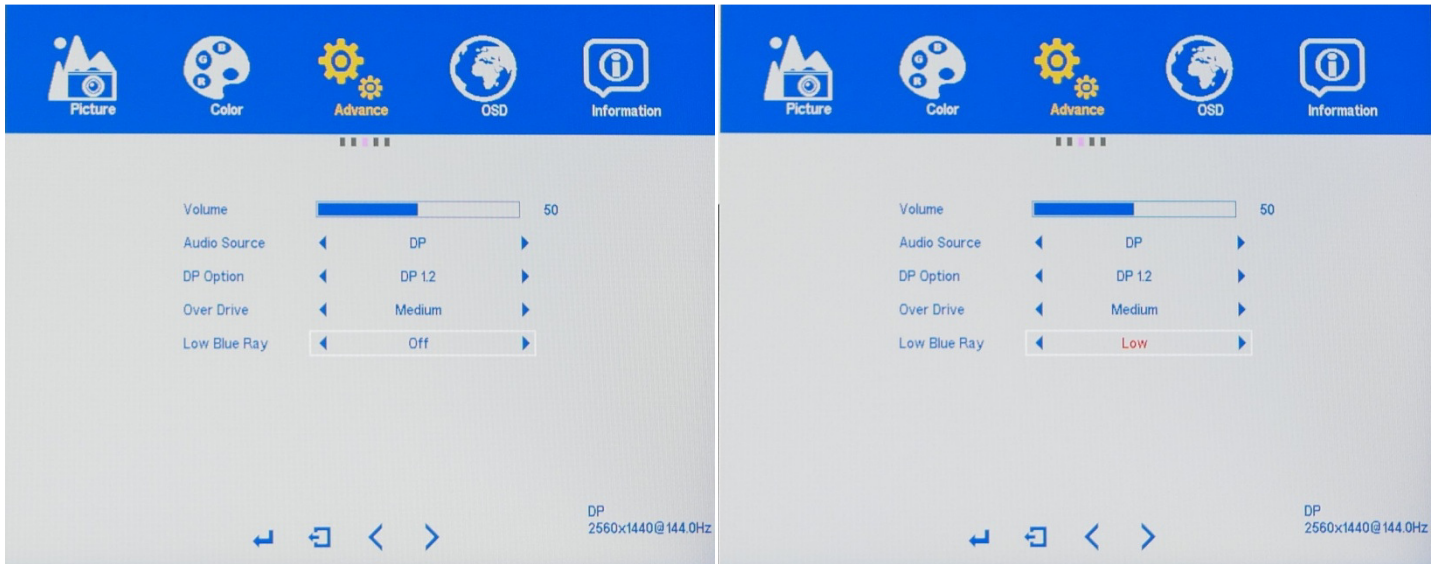


The NX-EDG27 has three OVER DRIVE settings of LOW, MEDIUM, and HIGH to help minimize ghosting in PC Games. The recommended setting is LOW due to MEDIUM or HIGH may be too strong for some games.

- a) In the ADVANCE sub-menu, use the buttons "**DOWN**" or "**UP**" to highlight OVER DRIVE and press "**MENU**" to confirm selection.
- b) Press "**VOL -**" or press "**VOL+**" to cycle through the OVER DRIVE settings. Default OVER DRIVE settings is OFF.
- c) Once you adjust the OVER DRIVE settings to your desired level, press "**MENU**" once to confirm and press "**AUTO**" exit to the ADVANCE sub-menu.

NOTE: OVER DRIVE performance and results may vary depending on the computer game or application. Recommended OVER DRIVE setting is LOW. When using AMD FreeSync Technology, Anti-Ghosting may automatically apply even when OVER DRIVE is set to OFF.

LOW BLUE RAY – LOW BLUE LIGHT DISPLAY FEATURE

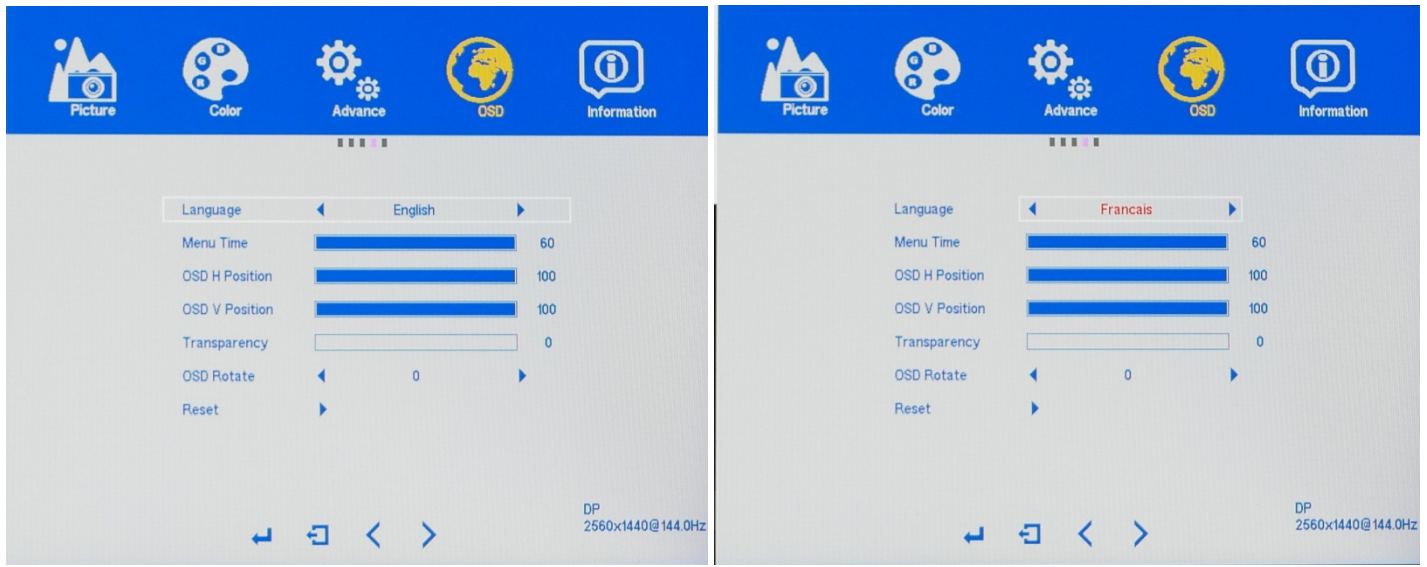


The NX-EDG27 has three LOW BLUE RAY settings of LOW, MEDIUM, and HIGH to help minimize blue light transmission from the monitor to help prevent eye strain or eye damage due to prolonged use. Lowering the blue light transmission will affect the accuracy of color for professional or gaming use of the display.

- a) In the PICTURE sub-menu, use the arrow buttons "**DOWN**" or "**UP**" to highlight LOW BLUE RAY and press "**MENU**" to confirm selection.
- b) Press "**VOL -**" or press "**VOL+**" to adjust the settings either. The default LOW BLUE RAY setting is OFF.
- c) Once you adjust the LOW BLUE RAY settings to your desired level, press "**MENU**" once to confirm and press "**AUTO**" exit to the PICTURE sub-menu.

On Screen Display (OSD) - OSD Settings Sub-Menu

OSD SETTINGS (Sub-Menu) - LANGUAGE



The NX-EDG27 supports multiple languages for its On Screen Display (OSD) Menu.

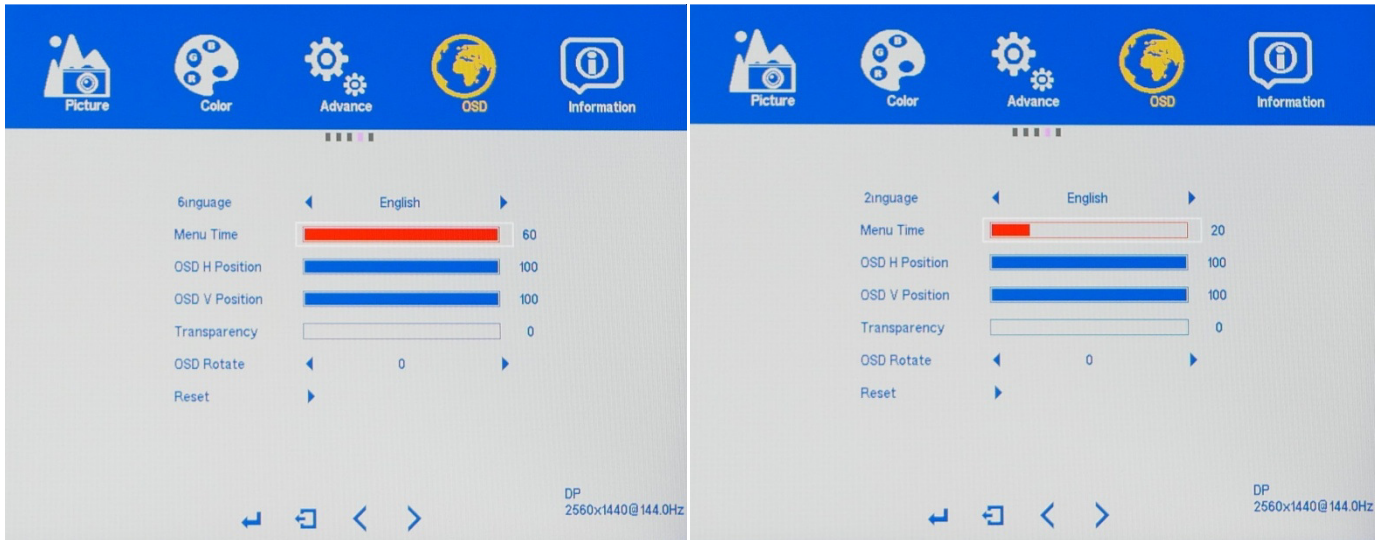
a) To bring up the OSD Main Menu, press "**MENU**". Next use the arrow buttons "**VOL -**" or press "**VOL+**" to navigate to the OSD SETTINGS sub-menu and press "**MENU**" to confirm selection.

a) Use the arrow buttons "**DOWN**" or "**UP**" to navigate to LANGUAGE. Make sure selection is highlighted (see picture) and press "**MENU**" to confirm selection.

b) Use the arrow buttons "**VOL -**" or press "**VOL+**" to navigate to the preferred "LANGUAGE." Make sure selection is highlighted (see picture) and press "**MENU**" to confirm selection. ENGLISH is the default LANGUAGE. Available LANGUAGES include French, Italian, Spanish, Dutch, and Portuguese.

c) Press "**AUTO**" once to confirm preferred settings and exit to the SETUP sub-menu to begin the next adjustment or to completely exit out of the On Screen Display by pressing "**AUTO**" again.

OSD SETTINGS (Sub-Menu) - MENU TIME



The MENU TIME feature allows you to set how long or how short the OSD Menu remains on screen. If you want the OSD Menu to immediately go away you can always press "AUTO."

a) To bring up the OSD Main Menu, press "MENU". Next use the arrow buttons "VOL -" or press "VOL+" to navigate to the OSD SETTINGS sub-menu and press "MENU" to confirm selection.

b) Use the arrow buttons "DOWN" or "UP" to navigate to MENU TIME. Make sure selection is highlighted (see picture) and press "MENU" to confirm selection.

c) The default OSD MENU TIME is 25 seconds. Use the arrow buttons "VOL -" or press "VOL+" to adjust between 5 seconds to 60 seconds for the MENU TIME or Duration of the OSD MENU. Press "MENU" once to confirm preferred settings and press "AUTO" to exit to the OSD SETTINGS sub-menu to begin the next adjustment or to completely exit out of the On Screen Display press "AUTO" again.

NOTE: Pressing "AUTO" can always be used to exit out of the OSD MENU without having to wait for the whole duration of the MENU TIME.

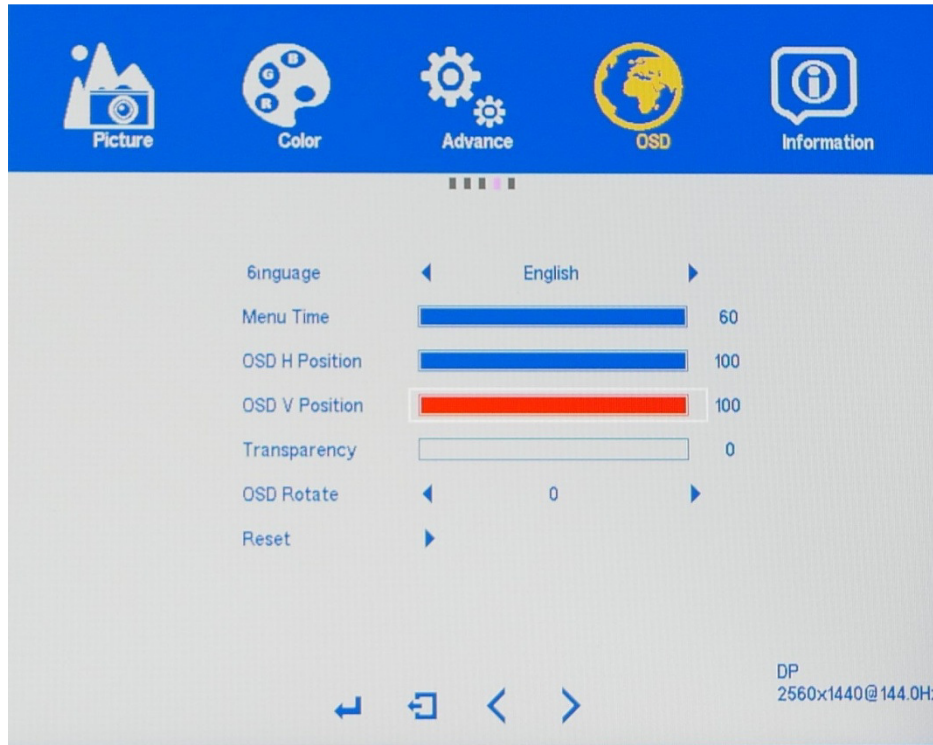
OSD SETTINGS (Sub-Menu) - OSD H POSITION



The OSD H POSITION and features allows you to set the OSD MENU (On Screen Display Menu) to either towards the left or right of your monitor's screen.

- a) Make sure the OSD H POSITION selection is highlighted in red (see picture) and press **"MENU"** to confirm selection.
- b) Use the arrow buttons **"VOL -"** or press **"VOL+"** to adjust between 0 to 100 for the OSD H POSITION placement of the OSD MENU towards the LEFT or RIGHT of the display.
- c) Press **"MENU"** once to confirm selection and exit to the OSD SETTINGS sub-menu to begin the next adjustment or to completely exit out of the On Screen Display press **"AUTO"** gain.

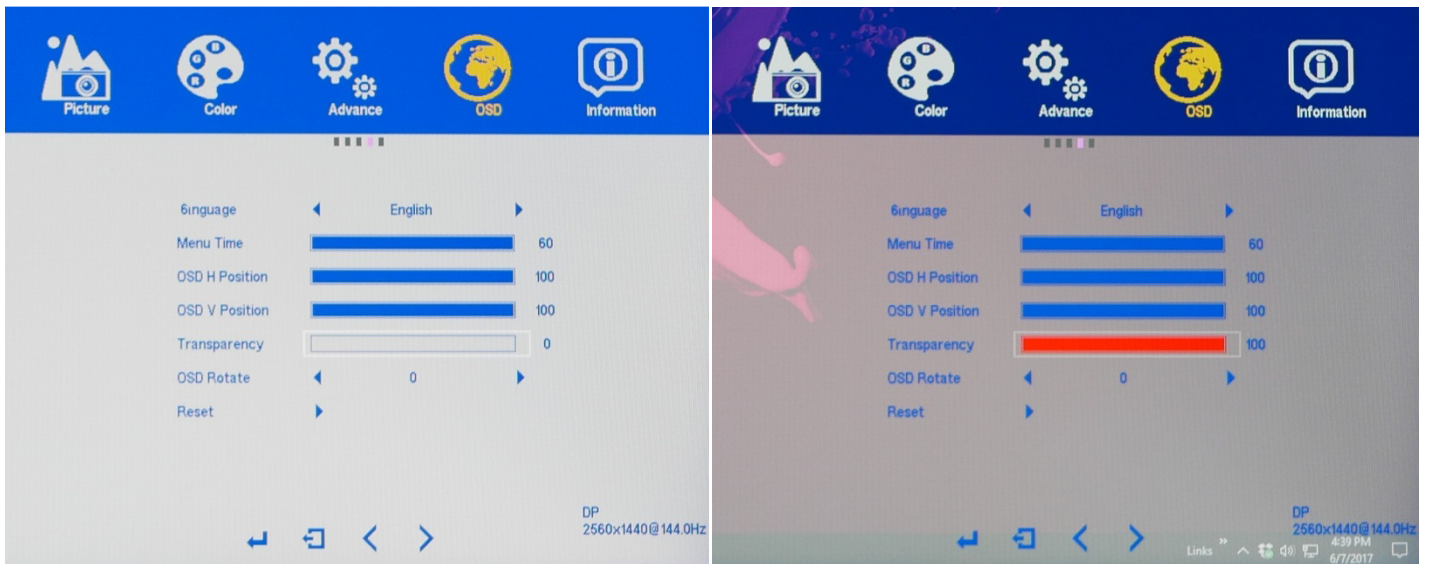
OSD SETTINGS (Sub-Menu) - OSD V POSITION



The OSD V POSITION and features allows you to set the OSD MENU (On Screen Display Menu) to either towards the top or bottom of your monitor.

- a) Make sure the VERTICAL selection is highlighted in red (see picture) and press **"MENU"** to confirm selection.
- b) Use the arrow buttons **"VOL -"** or press **"VOL+"** to adjust between 0 to 100 for the OSD V POSITION placement of the OSD MENU towards the TOP or BOTTOM of the display.
- c) Press **"MENU"** once to confirm selection and exit to the OSD SETTINGS sub-menu to begin the next adjustment or to completely exit out of the On Screen Display press **"AUTO"** again.

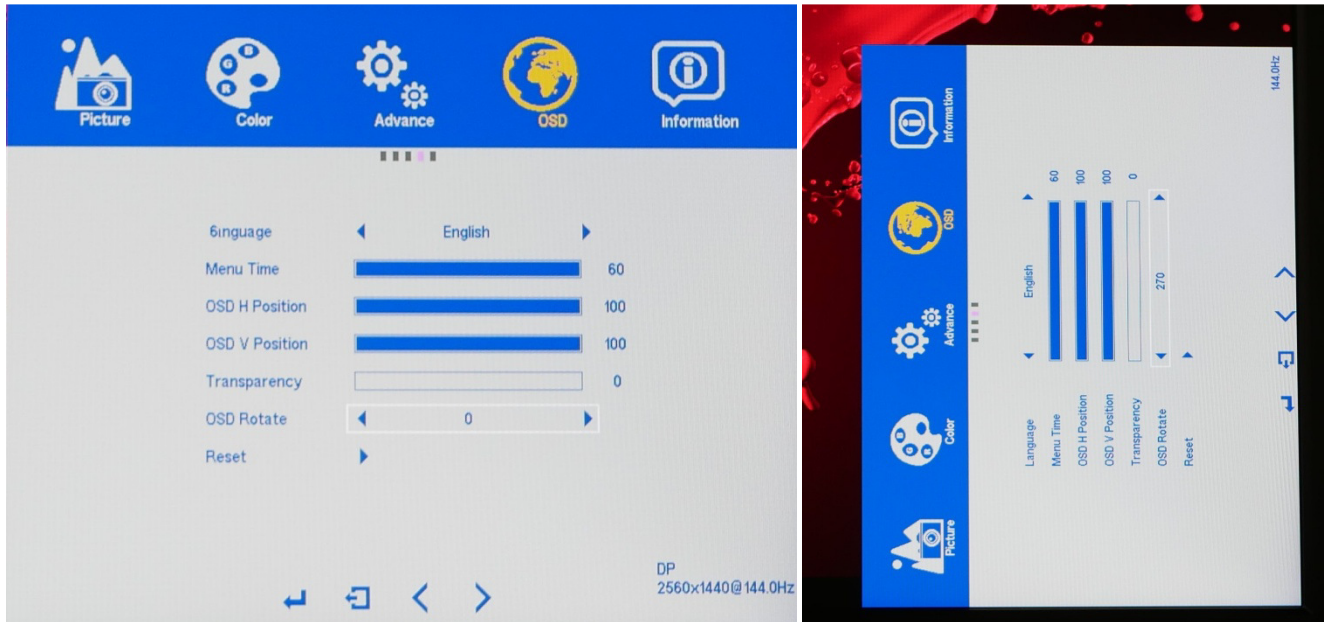
OSD SETTINGS (Sub-Menu) - TRANSPARENCY



The TRANSPARENCY feature allows you to make the OSD Menu more solid or transparent.

- a) To bring up the OSD Main Menu, press "**MENU**". Next use the arrow buttons [∇] or [Δ] to navigate to the OSD SETTINGS sub-menu and press "**MENU**" to confirm selection.
- b) Use the arrow buttons "**DOWN**" or "**UP**" to navigate to TRANSPARENCY. Make sure selection is highlighted (see picture) and press "**MENU**" to confirm selection.
- c) Use the arrow buttons "**VOL -**" or press "**VOL+**" to adjust between 0 to 100 for the TRANSPARENCY of the OSD MENU. Press "**MENU**" once to confirm preferred settings and exit to the OSD SETTINGS sub menu to begin the next adjustment or to completely exit out of the On Screen Display press "**AUTO**" again.

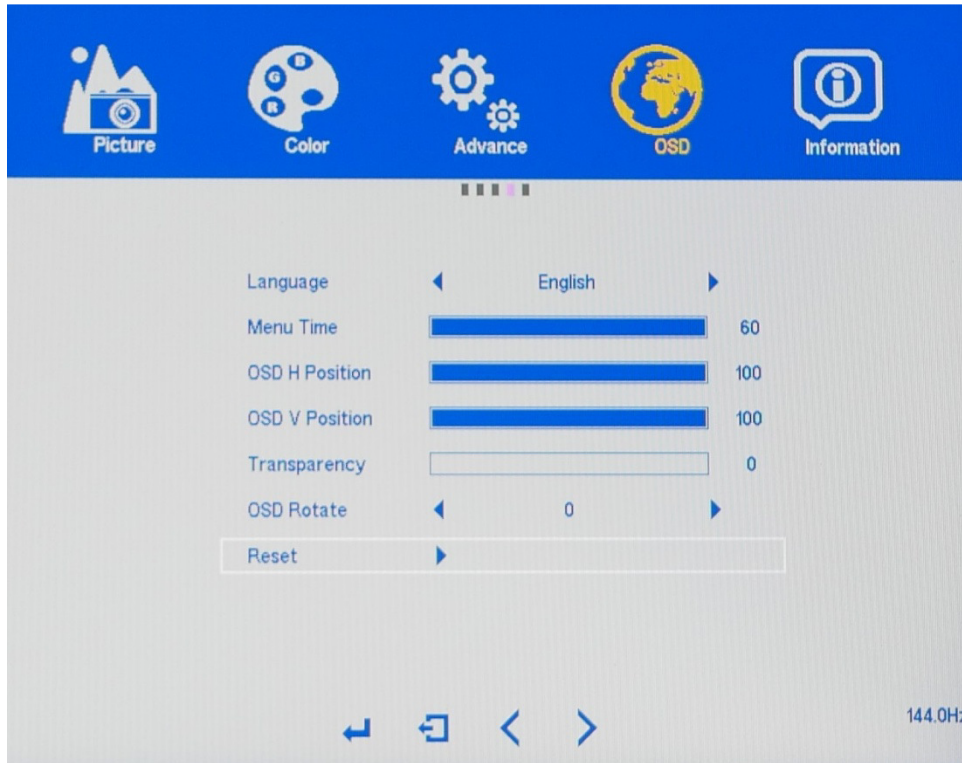
OSD SETTINGS (Sub-Menu) - OSD ROTATE



The OSD ROTATE feature allows you to rotate the orientation of the OSD Menu on the screen.

- a) To bring up the OSD Main Menu, press "**MENU**". Next use the arrow buttons "**VOL -**" or press "**VOL+**" to navigate to the OSD SETTINGS sub-menu and press "**MENU**" to confirm selection.
- b) Use the arrow buttons "**DOWN**" or "**UP**" to navigate to OSD ROTATE. Make sure selection is highlighted (see picture) and press "**MENU**" to confirm selection.
- c) Press "**AUTO**" once to confirm preferred settings and exit to the OSD ROTATE sub-menu to begin the next adjustment or to completely exit out of the On Screen Display by pressing "**AUTO**" again.

OSD SETTINGS (Sub-Menu) - RESET



The RESET feature in the OSD SETTINGS sub-menu will allow you to reset all On Screen Display (OSD) configurations or changes you have made - back to the monitors default settings.

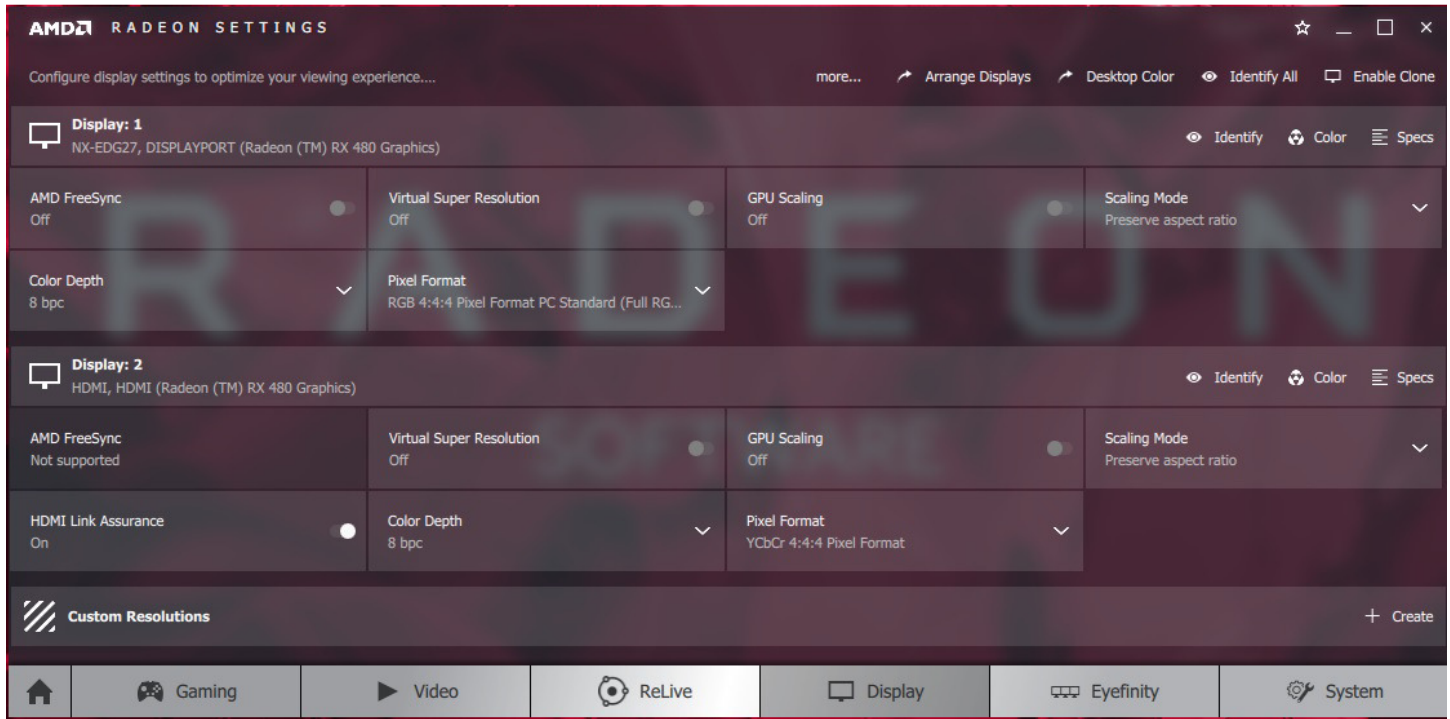
a) In the OSD SETTINGS sub-menu, use the "**DOWN**" or "**UP**" to navigate to RESET. Make sure selection is highlighted (see picture) and press "**MENU**" to RESET all changes made in the On Screen Display Menu (OSD).

AMD FreeSync™ Technology

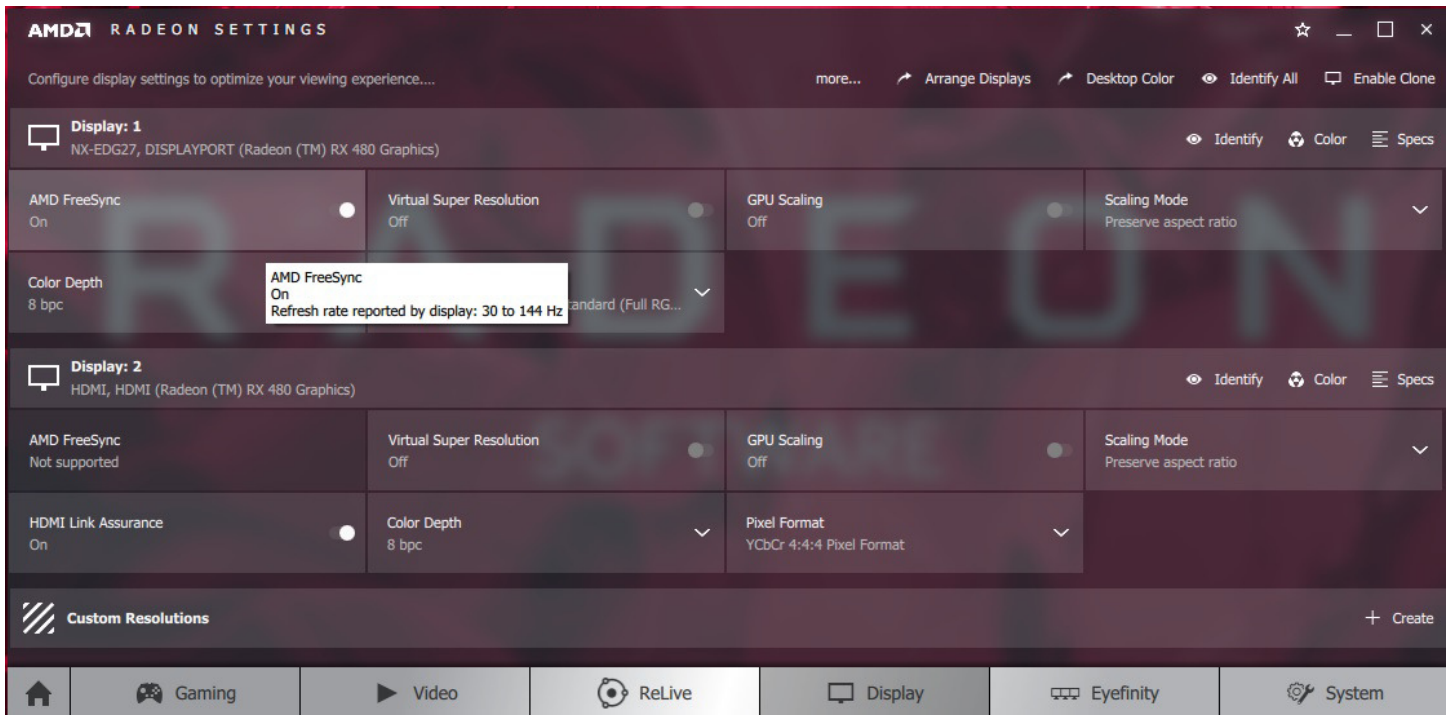
To enable FreeSync, you must first install a FreeSync compatible AMD Radeon Graphics Card and newest AMD Radeon Graphics Drivers in your computer. For more information regarding AMD FreeSync™ technology, please visit:

<http://www.amd.com/en-us/innovations/software-technologies/technologies-gaming/freesync>

The NX-EDG27 and NX-EDG27S has FreeSync enabled by default. FreeSync can be turned OFF or ON using the newest Radeon Software Settings:



- a) After installing the newest AMD Graphics Drivers for your computer - restart your computer.
- b) Open Radeon Settings and click on the DISPLAY tab.



- c) Navigate the mouse cursor to the AMD FreeSync section for the NX-EDG27.
- d) Click on the button to turn FreeSync ON or OFF.

NOTE: For the best FreeSync gaming experience, gaming applications must run in Full Screen Mode. Running in Windowed, Borderless Full Screen, or Exclusive Full Screen Windowed Mode may not be optimal at this time. Please refer to the latest AMD Radeon Graphic Driver release notes for more information at:

<http://support.amd.com/en-us/download>

YouTube Tutorial Video on "How to Enable AMD FreeSync with your Nixeus FreeSync Monitor:"

<https://www.youtube.com/watch?v=74mwr4hzMDI>

If you need additional assistance, please contact Nixeus toll free at 888-983-4128 or e-mail techsupport@nixeus.com

Nixeus Technology, Inc. (“Nixeus”) provides this Limited Warranty:

- Only to the person or entity that originally purchased the product from Nixeus or its authorized reseller or distributor, and
- Only for products purchased and delivered within the United States, the District of Columbia, U.S. Possessions or Protectorates, U.S. Military Installations, or addresses with an APO or FPO, and Canada.

Three Year Limited Warranty for NX-EDG27 and NX-EDG27S:

Nixeus warrants this product will be free from material defects in workmanship and materials under normal use from the original date of purchase.

- Product (excluding power supplies): Three (3) years
- Power supplies: Three (3) years
- Spare parts and spare kits: Ninety (90) days
- Larger monitor panels may have some glow around the edges or corners. This is known as back light bleed and panel Glow - this is normal due to the LED technology that allows more light and higher brightness to produce more vibrant colors and brighter pictures.
- Having up to 3 Bright or 3 Dark Pixel anomalies is considered normal and the monitor is not defective.

Warranty serviced monitors and RMA replacement parts may still consist of these allowed pixel anomalies. Monitor is considered defective if it contains MORE than the above stated allowed pixel anomalies.

Under this Limited Warranty will be, at Nixeus’s option, to either repair or replace the defective Product during the Warranty Period at no charge to the original owner excluding shipping and handling fees. The replacement product needs not to be new nor have identical make, model or part. Nixeus may replace the defective Product or any part thereof with any factory reconditioned product that Nixeus determines is equivalent in all material respects to the defective Product. Replacement or repaired Product will be warranted for the remainder of the original Warranty Period or ninety (90) days, whichever is longer.

Non-Applicability of Limited Warranty:

Limited Warranty of Nixeus’s products will not be applied to and does not cover any refurbished/reconditioned product and any product purchased through clearance or liquidation sale or other sales in which Nixeus, the sellers, or the liquidators expressly disclaim their warranty obligation, whereas the product is being sold “As-Is” without any warranty.

RMA (Return Merchandise Authorization) Request:

The customer shall return the product with proof of purchase to Nixeus for RMA processing. In case the return policy period has expired from the retailer or distributors and the product is within warranty, the customer shall submit a RMA to Nixeus as described below:

- Customer (End User) must submit a RMA request with the product as part of the claim with a written detail description of the Product issue allowing Nixeus to confirm the same, along with proof of purchase of the product (dated receipt).
- The customer must first contact technical support from Nixeus Technical Support at techsupport@nixeus.com, who will attempt to assist and remedy the customer in resolving their issues and concern with the product. If the product is considered defective or malfunctioning, the Customer (End User) must obtain a Return Material Authorization (“RMA”) number by completing the RMA form and entering the assigned RMA Number assigned by techsupport@nixeus.com.
- After an RMA number is assigned, the defective/malfunctioning product must be packaged securely in the original or other suitable shipping package to ensure that it will not be damaged in transit to Nixeus Technology, Inc. The RMA number must be visibly and clearly marked on the outside of the package. Do not include any manuals or accessories in the shipping package, Nixeus will only replace/repair the defective/malfunctioning product and will not ship back any accessories.
- The Customer (End User) is responsible for all incoming shipping charges to Nixeus. RMA replacements need be fully insured by the customer expense and shipped to Nixeus Technology, Inc., 4801 Little John Street, Suite E, Baldwin Park, CA 91706. Nixeus will not be held responsible for lost packages shipped during transit to Nixeus’s Office. Nixeus will ship back the repaired or replacement package any common carrier selected by Nixeus. Return shipping fees shall be paid by Nixeus, if a United States address is used, otherwise the product will be shipped to you using freight collect. Expedited shipment methods are available at Customers (End Users) expense upon request. We “Nixeus” reserve the right to deny and reject any returned products if

guidelines/instructions and request are not met, return shipment will be charged to the Customers "End Users" at their expense.

What Is Not Covered Under Limited Warranty:

The Limited Warranty provided by Nixeus does not cover the following:
Improper or incorrectly performed service maintenance or repairs voids this Limited Warranty. Products that Nixeus' judge to have been subjected to abuse, accident, alteration, modification, tampering, negligence, misuse, faulty installation, repair or service in any way that is not contemplated in the documentation for the product, or if the model or serial number has been altered, tampered with, defaced or removed, product failures due to power outages, and cosmetic damage, and does not limit damage that are caused by shipment, due to act of God. Any hardware, firmware or other products or services provided by anyone other than Nixeus.

Limitation of Liability:

NIXEUS IS NOT LIABLE UNDER ANY CONTRACT, NEGLIGENCE, STRICT LIABILITY OR OTHER LEGAL OR EQUITABLE THEORY FOR ANY LOSS OF USE OF THE PRODUCT, INCONVENIENCE OR DAMAGES OF ANY CHARACTER, WHETHER DIRECT, SPECIAL, INCIDENTAL OR CONSEQUENTIAL (INCLUDING, BUT NOT LIMITED TO, DAMAGES FOR LOSS OF GOODWILL, LOSS OF REVENUE OR PROFIT, WORK STOPPAGE, COMPUTER FAILURE OR MALFUNCTION, FAILURE OF OTHER EQUIPMENT OR COMPUTER PROGRAMS TO WHICH NIXEUS'S PRODUCT IS CONNECTED WITH, LOSS OF INFORMATION OR DATA CONTAINED IN, STORED ON, OR INTEGRATED WITH ANY PRODUCT RETURNED TO NIXEUS FOR WARRANTY SERVICE) RESULTING FROM THE USE OF THE PRODUCT, RELATING TO WARRANTY SERVICE, OR ARISING OUT OF ANY BREACH OF THIS LIMITED WARRANTY, EVEN IF NIXEUS HAS BEEN ADVISED OF THE POSSIBILITY OF SUCH DAMAGES TO THE MAXIMUM EXTENT PERMITTED BY LAW., THE SOLE REMEDY FOR A BREACH OF THE FOREGOING LIMITED WARRANTY IS REPAIR, OR REPLACEMENT OF THE DEFECTIVE OR NONCONFORMING PRODUCT. THE MAXIMUM LIABILITY OF NIXEUS UNDER THIS WARRANTY IS LIMITED TO THE PURCHASE PRICE OF THE PRODUCT COVERED BY THE WARRANTY. THE FOREGOING EXPRESS WRITTEN WARRANTIES AND REMEDIES ARE EXCLUSIVE AND ARE IN LIEU OF ANY OTHER WARRANTIES OR REMEDIES, EXPRESS, IMPLIED OR STATUTORY.

Governing Law:

This Limited Warranty shall be governed by the laws of the State of California. Some states do not allow exclusion or limitation of incidental or consequential damages, or limitations on how long an implied warranty lasts, so the foregoing limitations and exclusions may not apply. This Limited Warranty provides specific legal rights and you may also have other rights which vary from state to state.

Computer Hardware and Electronics Recycling:

Nixeus Technology, Inc is committed to a greener environment by encouraging all our Nixeus customers to recycle our covered electronic devices (CEDs) and accessories. It is illegal to throw away your electronic devices in regular garbage and landfills. Electronic devices need to be recycled or properly disposed of to avoid unnecessary harm to our community and environment. By donating, properly disposing and recycling your unwanted electronic products, we can work together to conserve our natural resources, reduce greenhouse gas emissions, and avoid air/water pollution.

**For more information regarding electronics recycling and proper disposal of electronics, please visit:
<http://www.nixeus.com/recycle/>**

Nixeus Technology, Inc
4801 Little John Street, Suite E
Baldwin Park, CA 91706
Toll Free: 888-983-4128
Phone: 626-869-5154
Fax: 626-381-9585
Tech Support & Warranty Service: techsupport@nixeus.com
Web Site: www.nixeus.com

Disclaimer:

Nixeus Technology, Inc is not responsible for any misspellings, typographical errors or omissions to this user manual. The contents of this user manual is subject to revisions and changes at anytime. AMD, Radeon, FreeSync and all mentioned brands and logos used with permission are the registered trademarks of their respective holders.